



## Rock Tavern to Sugarloaf Project Update

August 15, 2022

Dear Neighbor:

New York Transco's (Transco) top priority on all projects and activities is safety. As such, we would like to share some important safety information with you on the Rock Tavern to Sugarloaf Upgrade (RTS).

Enclosed please find two fact sheets on the topics of Hunting and Construction Safety, which provide useful information to keep in mind as construction moves forward. We encourage you to read these and keep them handy for reference during the project.

Work is currently underway at the Sugarloaf Substation in Chester. Construction crews are also installing project access roads and environmental controls in Hamptonburgh and Blooming Grove.

A two-week construction schedule is available on the homepage of our website [www.RTSUpgrade.com](http://www.RTSUpgrade.com). We anticipate completing construction by the end of 2023.

We appreciate your patience and cooperation as we continue work on RTS.

If you have any questions on RTS, or the enclosed information, please contact us at 800-314-4236 (toll-free) or [questions@RTSUpgrade.com](mailto:questions@RTSUpgrade.com).

Thank you,

Shannon Baxevanis  
Stakeholder & Communications Lead  
New York Transco

Enclosures:  
Construction Safety Fact Sheet  
Hunting Fact Sheet

### About RTS

*RTS is a proposed 12-mile transmission line upgrade from New Windsor to Chester that stays within existing utility corridors and/or utility-owned lands to help New York meet key environmental and economic goals by facilitating the flow of clean energy.*

New York Transco's Rock Tavern to Sugarloaf Upgrade (RTS), an electric transmission and station project, is under construction. Safety is our top priority. Please take note of this information.

## Project Location

RTS is being constructed on an existing utility corridor from New Windsor to Chester. For specific location information, please visit [www.RTSUpgrade.com](http://www.RTSUpgrade.com) and refer to the Project Map.

## No Unauthorized Access in the Corridor

The RTS transmission corridor primarily utilizes easements across private landowners and should only be entered by those with permission.

**Please do not enter RTS construction areas.** If you have a question, please contact us via our project hotline or email and **do not approach RTS construction personnel.**

## Traveling in Work Zones

When traveling near construction entrances and other work zones, please slow down and use extra caution. If you are walking or cycling near the corridor, it is helpful to wear brightly-colored clothes and use lights to increase your visibility.

## Do Not Touch Wires

If you see wire laying on the ground, please do not touch it. The wire could be energized and touching it could result in injury. Please contact us via our toll-free hotline immediately.



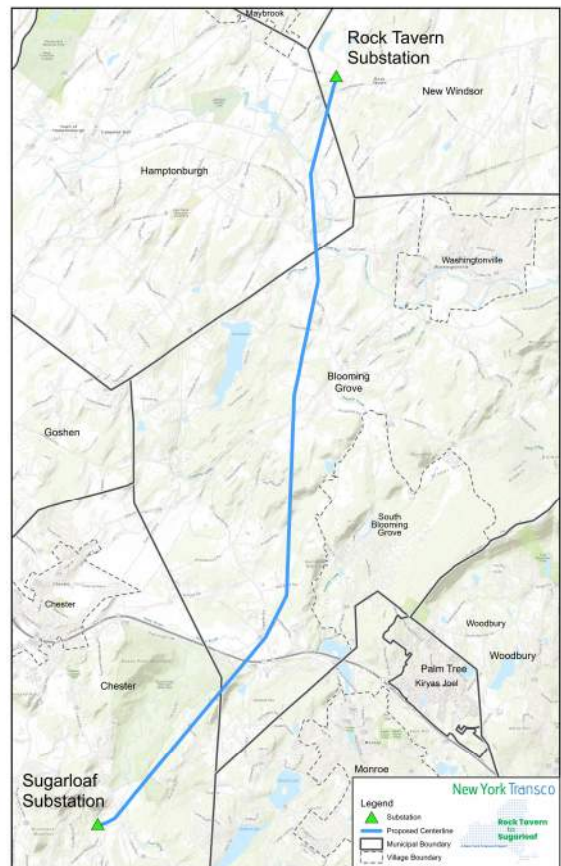
## Quick Construction Facts

**Locations:** New Windsor, Hamptonburgh, Blooming Grove, Chester


**Timing:** June 2022 through end of year 2023

**Schedule:** Two-week lookahead schedule on [www.RTSUpgrade.com](http://www.RTSUpgrade.com)

**Hours:** Typically Mon—Sat, 7 am to 7 pm



## Get In Touch

 Toll-Free: 1-800-314-4236

 [www.RTSUpgrade.com](http://www.RTSUpgrade.com)

 [Questions@RTSUpgrade.com](mailto:Questions@RTSUpgrade.com)

# Information for the Hunting Community

New York Transco’s Rock Tavern to Sugarloaf Upgrade (RTS), an electric transmission and station project, is currently under construction. Safety is our top priority. Please take note of this information for hunting in and around the transmission corridor.

## Project Location

RTS is being constructed on an existing utility corridor from New Windsor to Chester. For specific location information, please visit [www.RTSUpgrade.com](http://www.RTSUpgrade.com) and refer to the Project Map

## No Unauthorized Access in the Corridor

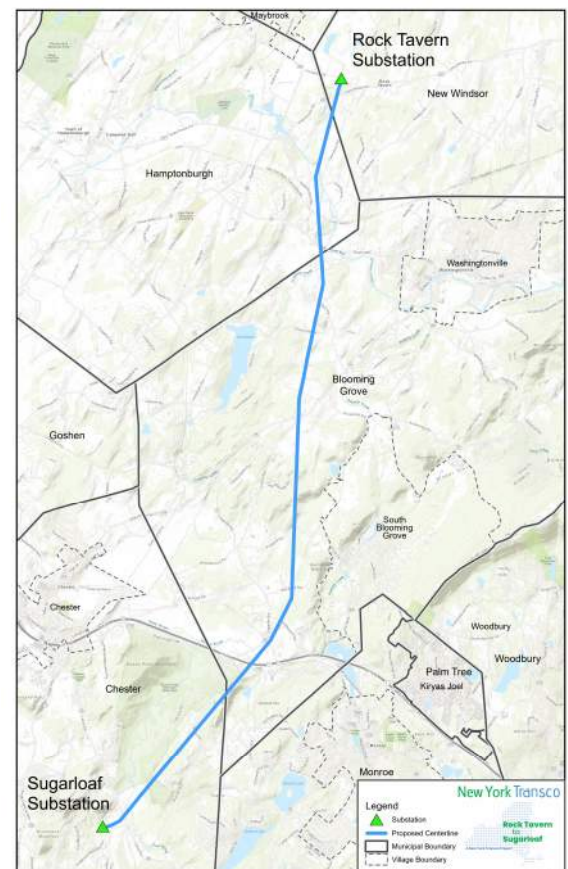
The RTS transmission corridor primarily utilizes easements across private landowners. **Hunting is categorized as an incompatible use by New York Transco and is not authorized in the transmission corridor.**

## What to Watch Out For

RTS construction crews will be active in the transmission corridor as well as adjacent access roads. They will be dressed in Personal Protective Equipment (PPE), including high visibility vests.

## Quick Facts

- Locations:** New Windsor, Hamptonburgh, Blooming Grove, Chester
- Timing:** June 2022 through end of year 2023
- Schedule:** Two-week lookahead schedule on [www.RTSUpgrade.com](http://www.RTSUpgrade.com)
- Hours:** Typically Mon–Sat, 7 a.m. to 7 p.m.



## Get In Touch

 Toll-Free: 1-800-314-4236

 [www.RTSUpgrade.com](http://www.RTSUpgrade.com)

 [Questions@RTSUpgrade.com](mailto:Questions@RTSUpgrade.com)