



Dear Neighbor,

You are receiving this notice as an abutting landowner to one of the materials storage sites that New York Transco (Transco) has secured for the Rock Tavern to Sugarloaf Project (RTS), an electric transmission line and station upgrade project in Orange County.

**What is the RTS Project?**

The RTS Project will upgrade existing aging electric transmission lines and stations in Orange County for the purpose of adding capacity to the system to better facilitate renewable energy. The transmission line and station work will be done in existing utility corridors or on utility property in New Windsor, Hamptonburgh, Blooming Grove and Chester.

**Where are the material storage sites?**

The material storage sites will be used throughout the construction of RTS for storing materials such as transmission poles, reels of wire, and construction vehicles. One site is located on Andrews Lane in Chester, and another is on Fairway Drive in South Blooming Grove (former driving range). Details on these sites can be found in the Phase II Environmental Management and Construction Plan (Phase II EM&CP) that Transco submitted to the New York Public Service Commission (PSC) under Case # 20-T-0549.

**Did Transco purchase the property at these sites?**

**No, Transco is leasing the sites from the property owners for temporary use during construction. Once construction and restoration of the transmission corridor and station sites are complete, Transco will cease use of the material storage sites and restore those sites as well.**

**What is the Phase II EM&CP?**

This submittal includes plans and specifications for environmental protections and construction activities associated with the transmission line and station work, as well as the two material storage sites. Pending regulatory approvals, construction is anticipated to begin as early as this spring (2022).

**How can I review and comment?**

The Phase II EM&CP document can be reviewed either on the PSC's website ([www.dps.ny.gov](http://www.dps.ny.gov)) under Case # 20-T-0549; on the project website at [www.RTSUpgrade.com](http://www.RTSUpgrade.com); or at a document repository, as noted in the attached Public Notice.

## Project Overview

The Rock Tavern to Sugarloaf Upgrade (RTS) is a 12-mile electric transmission upgrade in Orange County that will replace 115,000 kilovolt (115 kV) transmission structures and lines between existing substations in New Windsor and Chester. All work will be completed within an existing transmission corridor and/or utility-owned lands. RTS will help New York meet key environmental and economic goals by facilitating the flow of clean energy. Details on construction were submitted by New York Transco in the Phase II Environmental Management & Construction Plan (EM&CP), filed with the New York State Public Service Commission (PSC) (Case #20-T-0549).

## 115 kV Transmission Line

The RTS includes the removal of existing 115 kV lattice structures and installation of new 115 kV monopole structures. The line will be constructed in phases: (1) access and environmental controls installation; (2) foundations; (3) structure spotting and erection; (4) removal of old structures; (5) wire stringing; and (6) restoration. Vegetation along the corridor will be removed as necessary for construction.

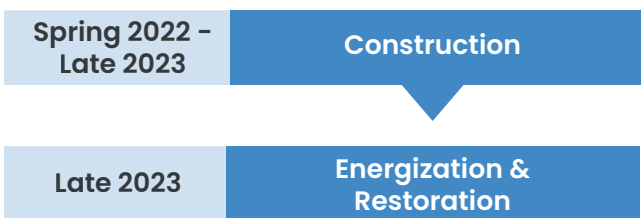
## Rebuilt Sugarloaf Substation

The RTS includes the removal of the existing 115 kV Sugarloaf Switching Station and construction of the rebuilt Sugarloaf Substation at the same location off Sugarloaf Mountain Road. The rebuilt substation will include a new transformer and ring bus. RTS also includes a new approx. 1000-foot 138 kV tie line connecting the rebuilt substation to Orange & Rockland's existing 138 kV Switching Station.

## Rock Tavern Substation

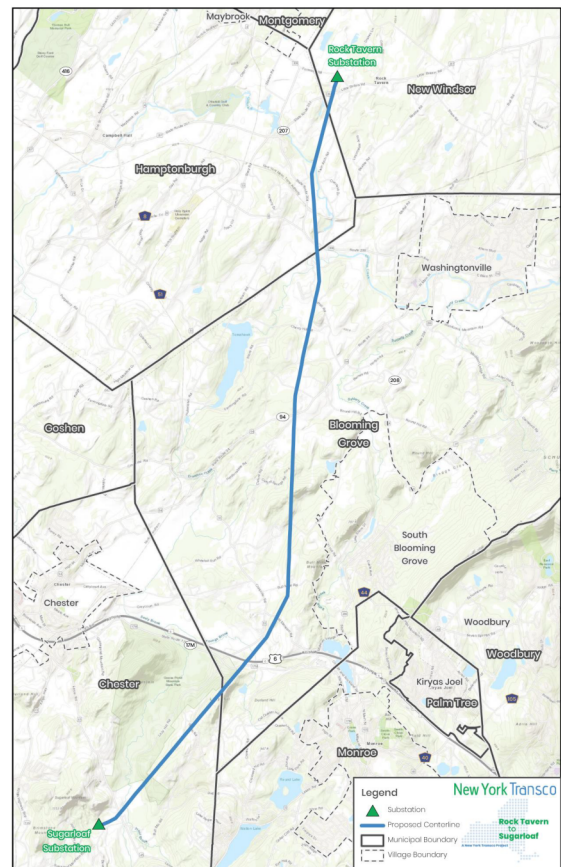
Minor modifications will occur at Central Hudson Gas & Electric's Rock Tavern Substation in New Windsor.

## Estimated Project Timeline






## Quick Facts:

- What:** Second phase of RTS construction, including transmission lines and station construction
- Where:** New Windsor to Chester, NY
- Work Hours:** Monday – Saturday, 7 AM – 7 PM
- Permitting:** PSC Phase II EM&CP Review/Approval  
*Note: Phase I for tree removals at the Sugarloaf Switching Station is being reviewed by the PSC*
- Comments:** Submit any time via toll-free hotline and email below. Comments can also be submitted on [www.dps.ny.gov](http://www.dps.ny.gov), Case #20-T-0549.



## Get in Touch:

-  800-314-4236 (Toll-Free)
-  [www.RTSUpgrade.com](http://www.RTSUpgrade.com)
-  [questions@RTSUpgrade.com](mailto:questions@RTSUpgrade.com)

Attached, please find the Phase II EM&CP Public Notice and fact sheet.

Please contact our team with any questions or comments through our toll-free hotline at **800-314-4236** or email at [questions@RTSupgrade.com](mailto:questions@RTSupgrade.com).

Best Regards,

A handwritten signature in black ink that reads "Shannon Baxevaris". The signature is written in a cursive style with a large initial 'S'.

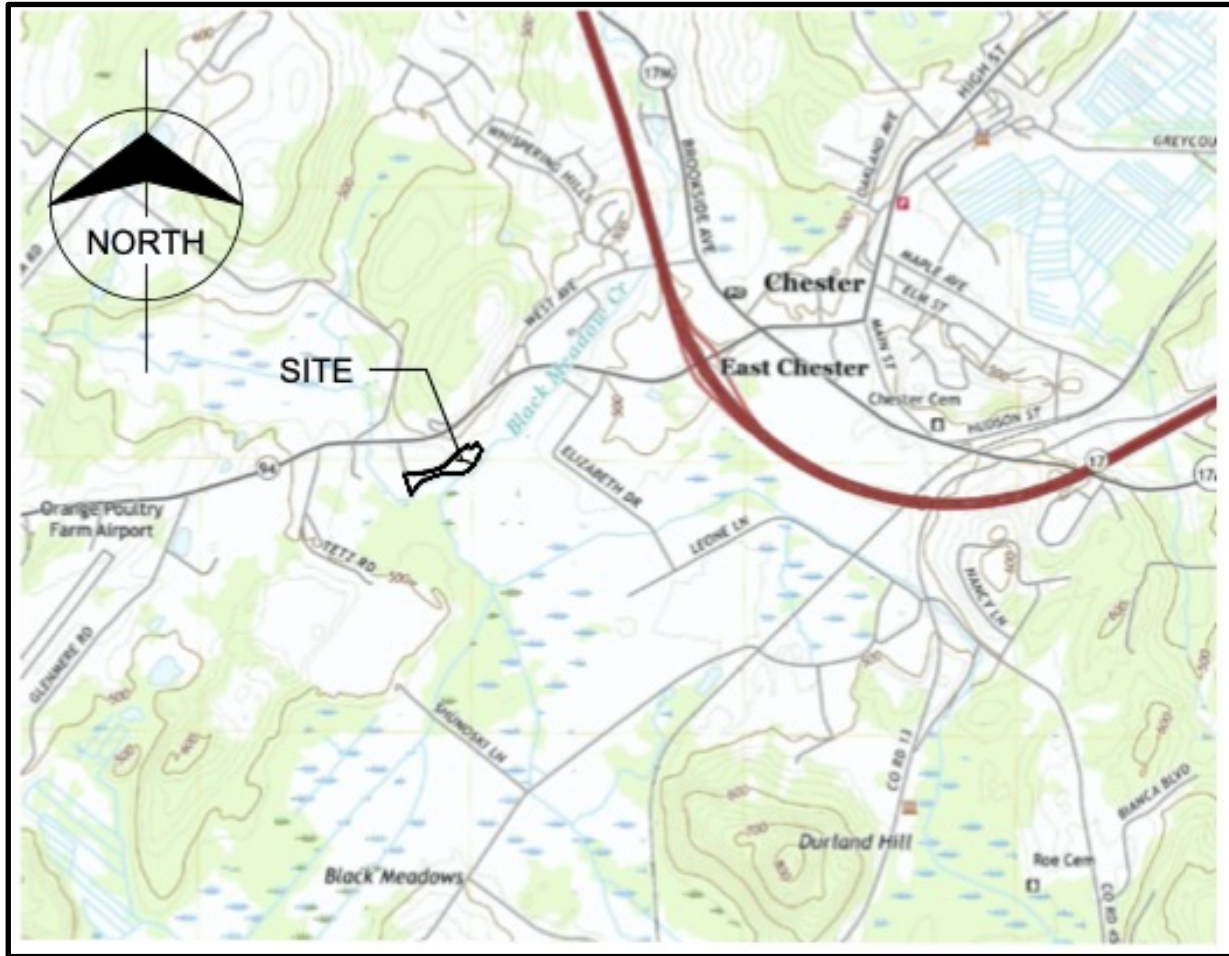
Shannon Baxevaris

New York Transco

Enclosures (2): Phase II EM&CP Public Notice and Fact Sheet

# Laydown Yards

Site: Andrews Lane, Chester



Site: Rt 208, Village of South Blooming Grove



## **PUBLIC NOTICE**

Case 20-T-0549 – Application of New York Transco LLC for a Certificate of Environmental Compatibility and Public Need Pursuant to Article VII of the New York Public Service Law to Construct, Operate, and Maintain a New, Single-Circuit 12-mile Overhead 115 kV Electric Transmission Line and Related Facilities In the Towns of New Windsor, Hamptonburgh, Blooming Grove, and Chester in Orange County.

### **NOTICE OF FILING OF THE PHASE II ENVIRONMENTAL MANAGEMENT AND CONSTRUCTION PLAN FOR THE ROCK TAVERN TO SUGARLOAF PROJECT**

On or about January 14, 2022, New York Transco LLC (“NY Transco”) will file or has filed a proposed Phase II Environmental Management and Construction Plan (“EM&CP”) with the New York State Public Service Commission (“Commission”) for the Rock Tavern to Sugarloaf Project (the “Project”). The Project will address a contingency created by increased transmission capacity across the Central East and UPNY/SENY interface. The Commission granted NY Transco a Certificate of Environmental Compatibility and Public Need (“CECPN”) for the Project on September 9, 2021. NY Transco filed its Phase I EM&CP with the Commission on October 19, 2021.

#### **PHASE II EM&CP**

An EM&CP describes, in detail, the environmental protection measures, construction procedures, and scope of work proposed during construction of the subject project.

Construction associated with Phase II of the Project includes transmission line portion of the Project, as well as the demolition of the switching station to be rebuilt as a substation (the “Rebuilt Sugarloaf Substation”), installation of a new 138 kilovolt (“kV”) tie lie, the replacement of Structure 1241 which is the first structure outside of the Rebuilt Sugarloaf Substation, and use of an associated laydown yard. Phase II construction and related efforts will take place in the Towns of New Windsor, Hamptonburgh, Blooming Grove, and Chester, as well as the Village of Blooming Grove, in Orange County.

NY Transco developed this Phase II EM&CP after collaboration with the Staff of several State agencies, including the New York State Department of Public Service.

The Phase II EM&CP will be available for public inspection via uploaded documents on a designated computer during normal business hours at the following locations: Newburgh Free Library, 124 Grand St., Newburgh, NY 12550; Goshen Public Library & Historical Society, 366 Main St., Goshen, NY 10924; and Chester Public Library, 1784 Kings Highway, Chester, NY 10918. In addition, paper hardcopies of the EM&CP will be available for public inspection during normal business hours at the following locations: Moffat Library, 6 West Main Street, Washingtonville, NY 10992.

The Phase II EM&CP will also be available for public inspection on NY Transco’s Project-specific website: [www.RTSUpgrade.com](http://www.RTSUpgrade.com). The Phase II EM&CP may also be viewed online at the website maintained by the New York State Department of Public Service at [www.dps.ny.gov](http://www.dps.ny.gov). From the homepage, click on “Search,” and enter the case number, 20-T-0549, in the “Search by Case Number” field.

---

## COMMENTS, COMPLAINTS, AND FURTHER INFORMATION

Any person may be heard by the Commission on any matter or objection regarding the Phase II EM&CP by filing written comments with the Secretary to the Commission and NY Transco (at the addresses immediately below) within 30 days of the date the Phase II EM&CP was filed with the Commission or the date of newspaper publication of this notice, whichever is later. Please reference Case No. 20-T-0549 – Rock Tavern to Sugarloaf Project. The Environmental Compliance Section of DPS can be reached at (518) 474-8702.

**Hon. Michelle Phillips**

Secretary to the Commission  
New York State Public Service Commission  
Empire State Plaza, Agency Building 3  
Albany, NY 12223-1350  
Phone: (518) 474-6530  
Fax: (518) 474-9842  
Email: [secretary@dps.ny.gov](mailto:secretary@dps.ny.gov)

**Shannon Baxevanis**

Stakeholder & Communications Lead  
New York Transco LLC  
P.O. Box 1250  
Hudson, NY 12534  
Phone: (800) 314-4236 (Toll-Free)  
Email: [questions@rtsupgrade.com](mailto:questions@rtsupgrade.com)  
Website: <https://www.rtsupgrade.com/>

The NY Transco agent or employee who will receive complaints, if any, during the Phase II construction component of the Project is Shannon Baxevanis, whose contact information is:

**Shannon Baxevanis**

Stakeholder & Communications Lead  
New York Transco LLC  
P.O. Box 1250  
Hudson, NY 12534  
Phone: (800) 314-4236 (Toll-Free)  
Email: [questions@rtsupgrade.com](mailto:questions@rtsupgrade.com)  
Website: <https://www.rtsupgrade.com/>

For additional information on the Project, contact NY Transco by calling toll-free (800) 314-4236 or by emailing [questions@RTSUpgrade.com](mailto:questions@RTSUpgrade.com).

---