

Public Information Forum

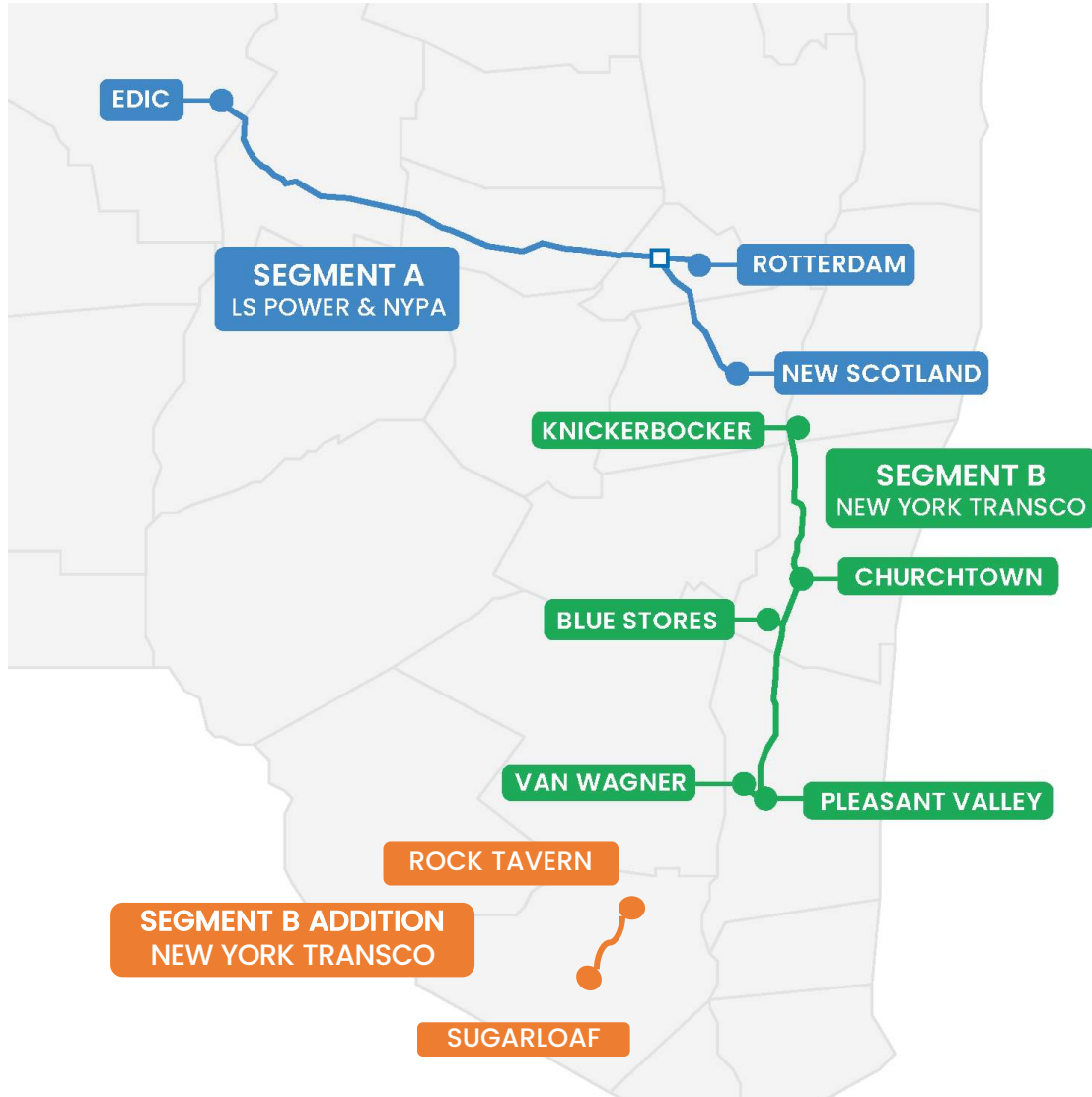
April 29, 2021

Project Overview

Case No. 20-T-0549



NYISO-Selected Transmission Solutions



- Relieve congestion & facilitate renewables
- Use existing utility rights-of-way
- Upgrade aging system(s)

Segment A (Case 19-T-0549):

- Utica to outside of Albany
- Developed by LS Power & NYPA

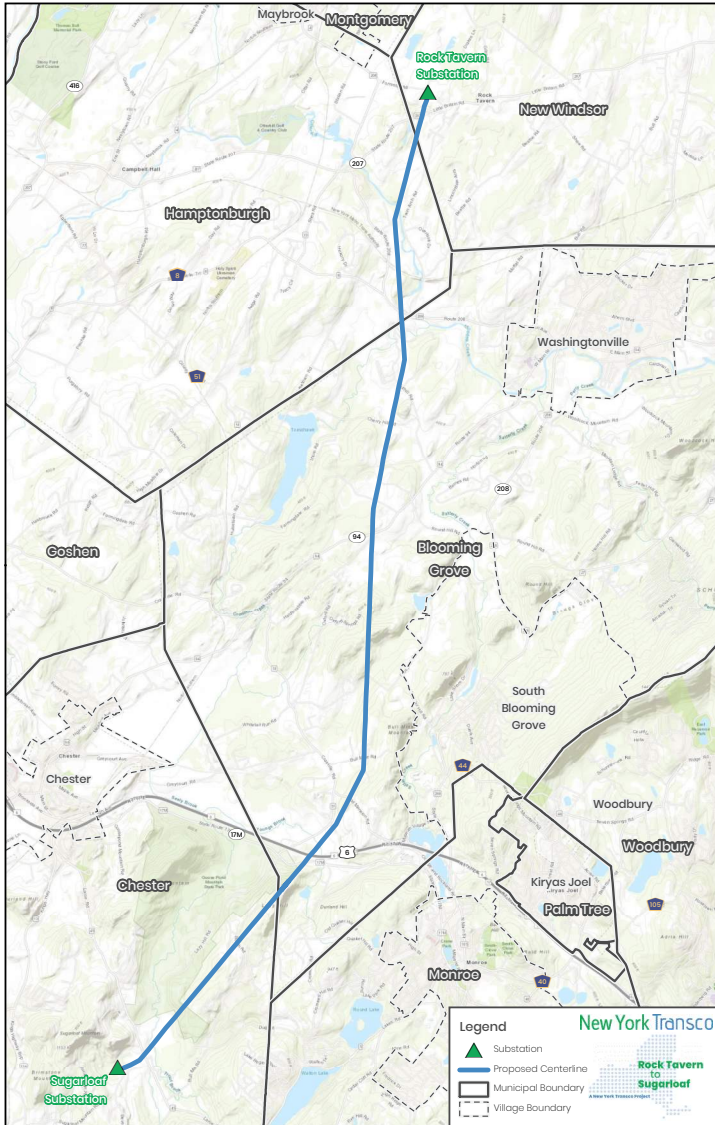
Segment B (Case 19-T-0684):

- New York Energy Solution
- Schodack to Pleasant Valley
- Developed by NY Transco

Segment B Addition (Case 20-T-0549):

- Rock Tavern to Sugarloaf Project
- New Windsor to Chester
- Developed by NY Transco

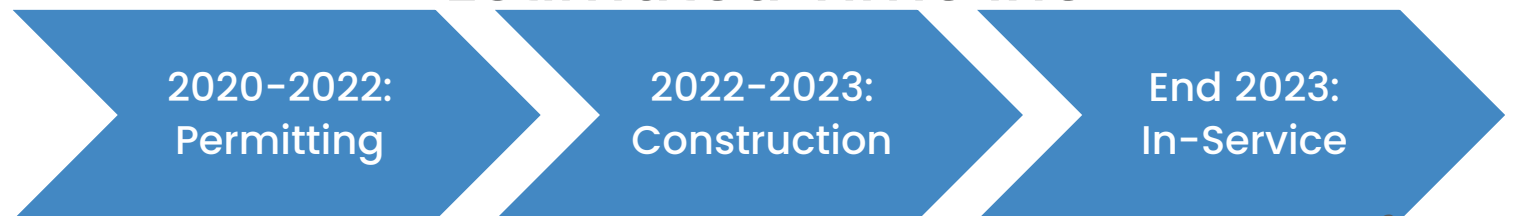
Rock Tavern to Sugarloaf (RTS)



- Replaces 95 year old assets in existing ROW
- 12-mile overhead 115kV on monopoles
- Upgrades at existing stations

Town	Station/Mileage
New Windsor	Rock Tavern/0.5
Hamptonburgh	2
Blooming Grove	6.75
Chester	Sugarloaf/2.5

Estimated Timeline



RTS Transmission Line Rebuild



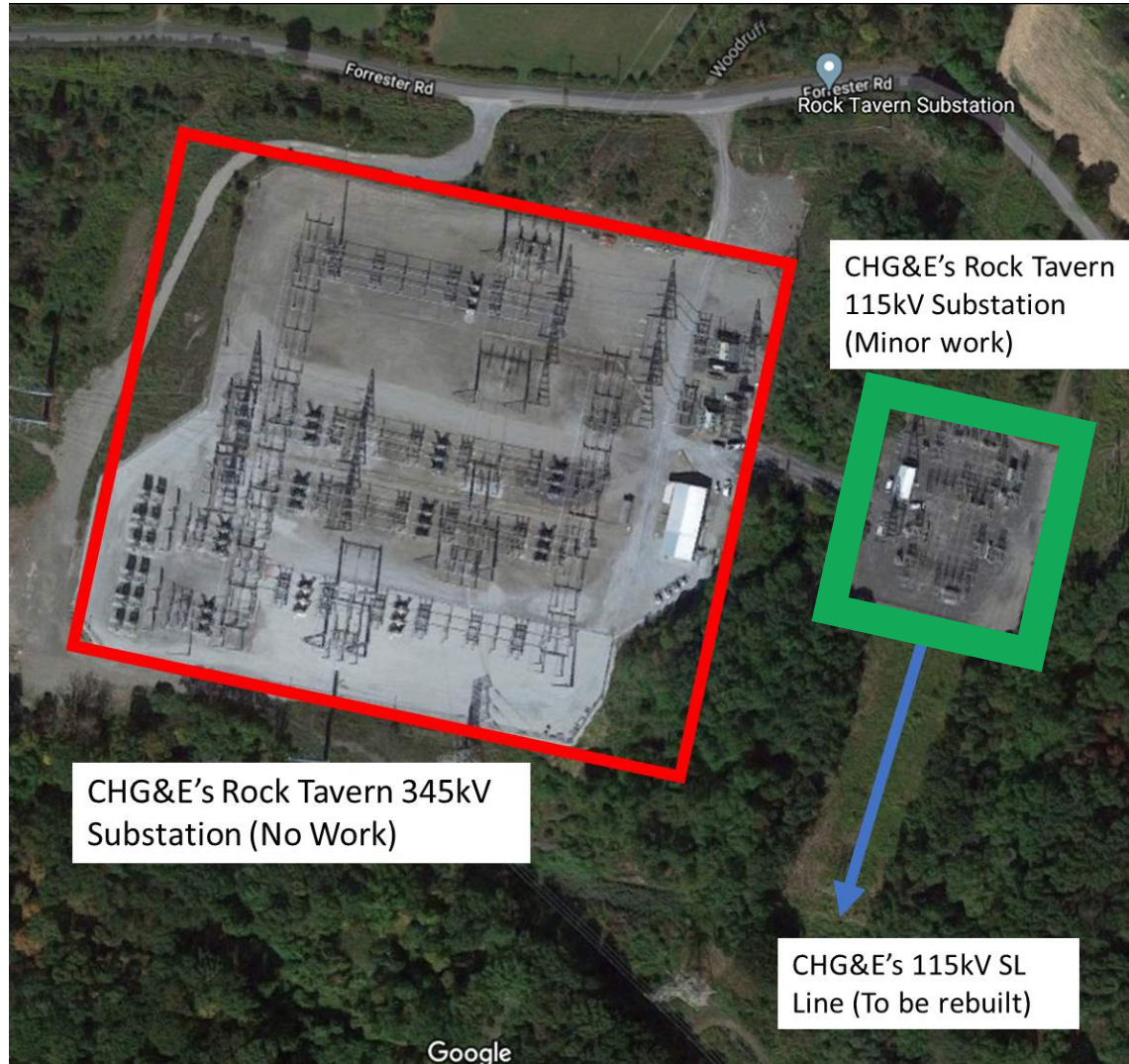
Current



Future

New monopole structures are on average 6 feet higher than existing lattice structures

Rock Tavern Substation



- Location: New Windsor, off Forrester Rd
- Owned and operated by Central Hudson Gas & Electric
- **Minor modifications to 115kV substation**
 - Equipment upgrades
 - Terminal structure
 - Relay protection

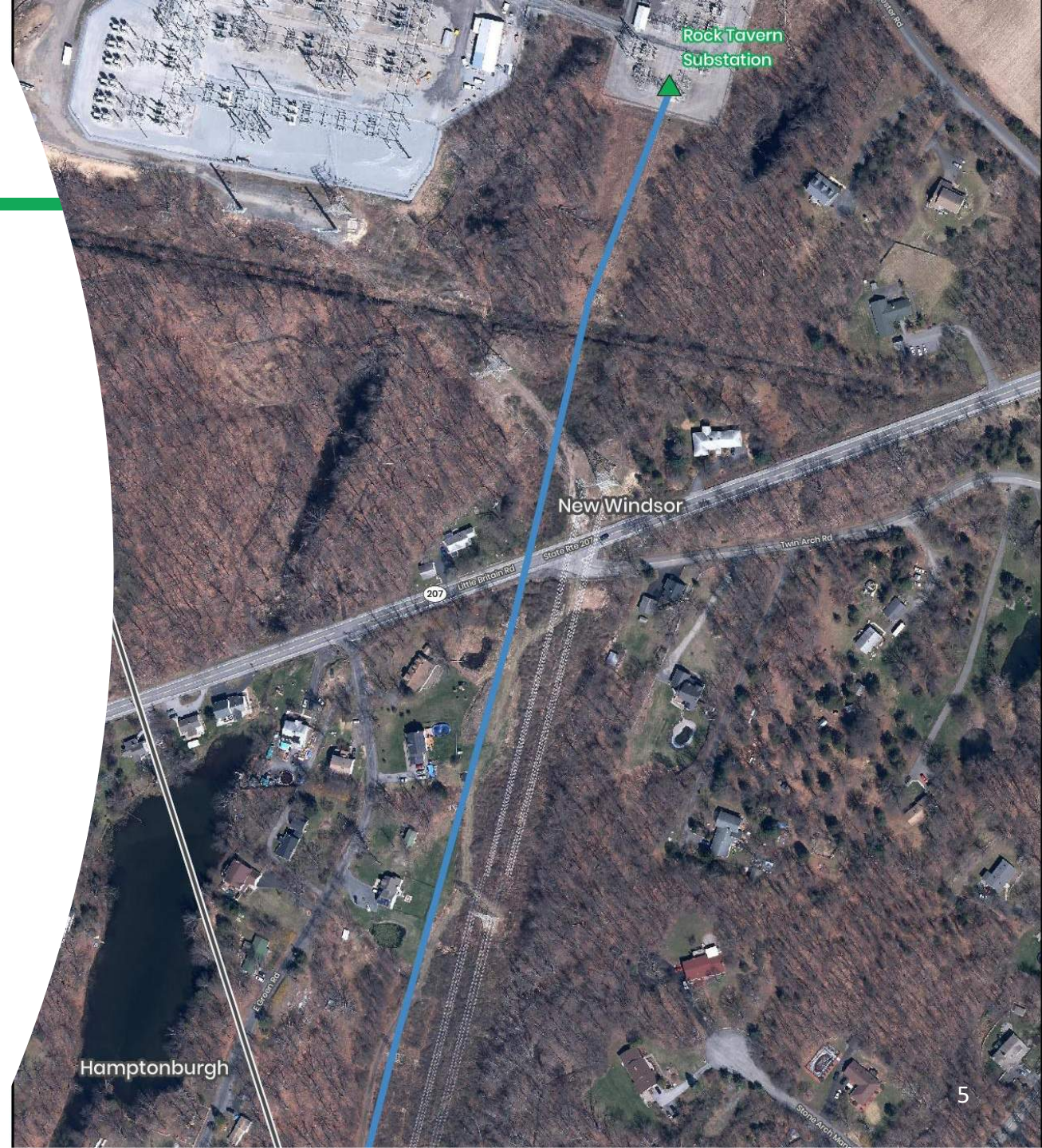
New Windsor

Approx. 0.5 miles of overhead transmission line work

3 existing lattice structures removed and replaced with 3 new monopoles

1 Road Crossing

Road Use Agreement Executed



Hamptonburgh

Approx. 2 miles of overhead transmission line work

15 existing lattice structures removed and replaced with 15 new monopoles

1 Road Crossing

Road Use Agreement Executed

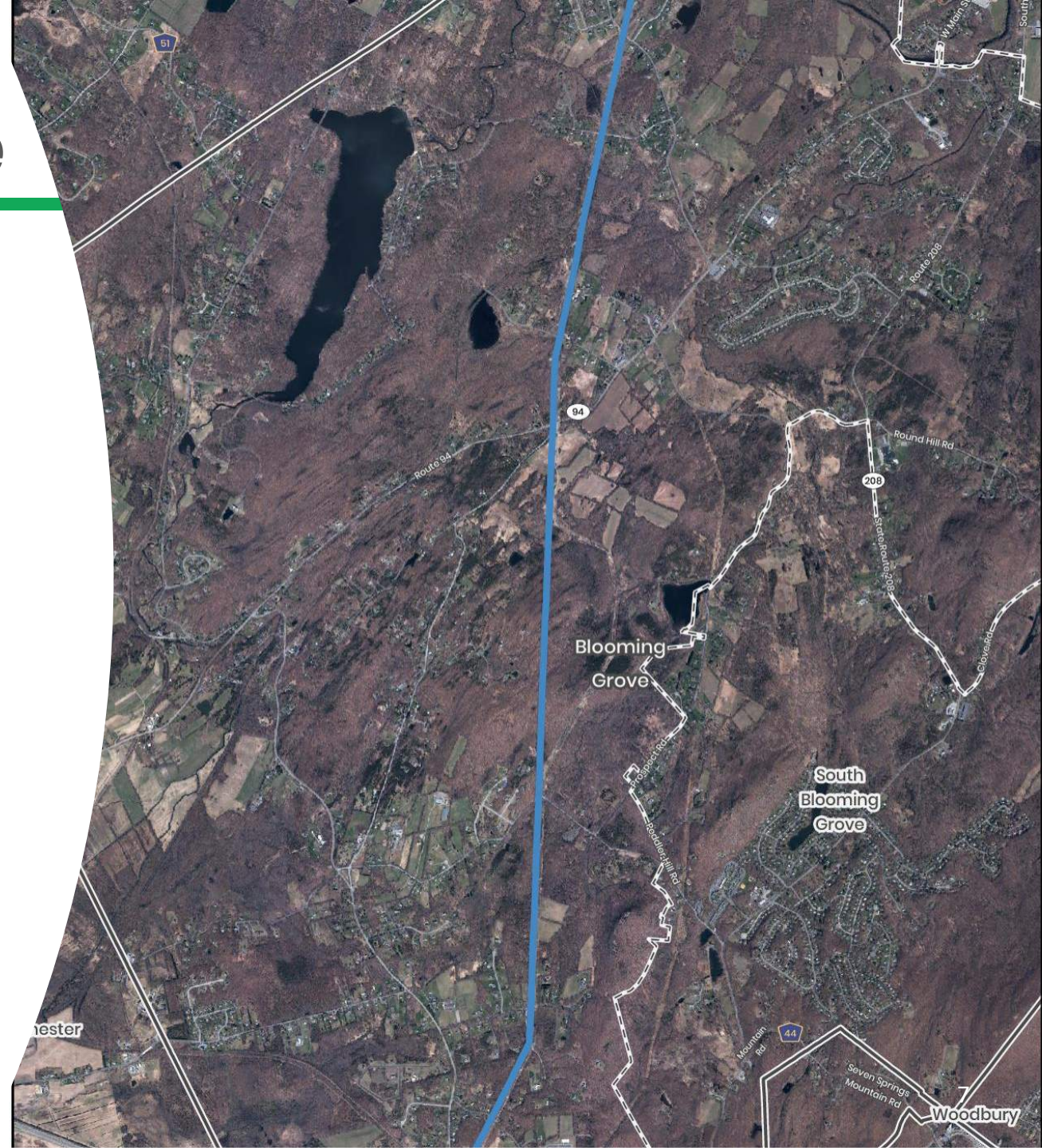


Blooming Grove

Approx. 6.75 miles of overhead transmission line work

51 existing lattice structures removed and replaced with 50 new monopoles

12 Road Crossings
Road Use Agreement Executed



Chester

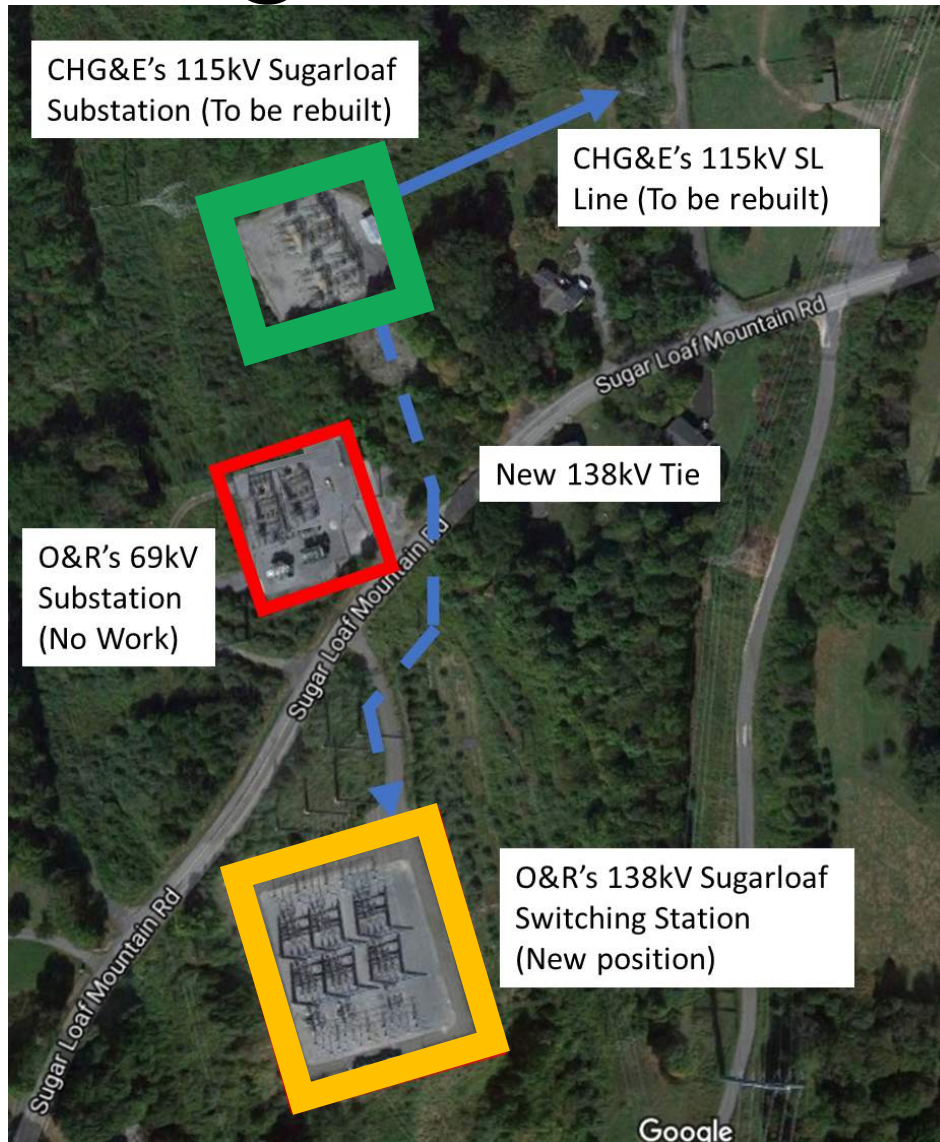
Approx. 2.5 miles of overhead transmission line work

20 existing lattice structures removed and replaced with 22 new monopoles

3 Road Crossings
Road Use Agreement Executed



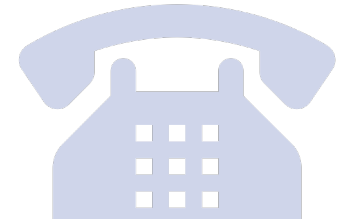
Sugarloaf Substation



- Location: Chester, off Sugar Loaf Mountain Road
- Proposed RTS line comes into the Central Hudson 115kV station
- **Complete rebuild of 115kV station**
 - Ring bus with 115/138kV transformer
- Build approx. 1000' 138kV tie to O&R's 138kV switching station
- Build new position in existing footprint at O&R's 138kV switching station

Public Involvement

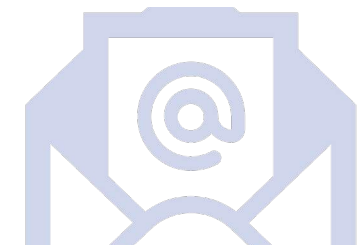
- Central focus of Transco & RTS
- Committed to working with all stakeholders
- Proactive, transparent and accessible
 - Municipal Consultations & Briefings
 - One-on-One Abutter Meetings
 - Open houses/Community Meetings
 - Project Notifications, Fact Sheets, PPTs



800-314-4236



www.RTSUpgrade.com

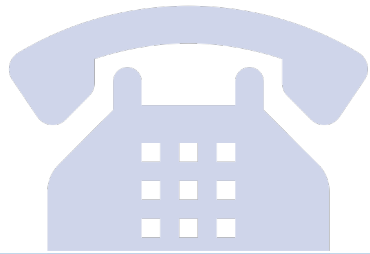


questions@RTSUpgrade.com

Project Support



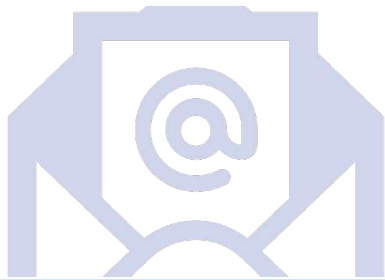
Supporter	Constituencies
Senator Martucci	Hamptonburgh
Assemblyman Schmitt	New Windsor, Hamptonburgh, Blooming Grove & Chester
Orange County Partnership	County-wide businesses
IBEW	Union members
Construction Contractors Association of Hudson Valley	Area businesses
Hudson Valley Building & Construction Trades Council	Union members



800-314-4236



www.RTSUpgrade.com



questions@RTSUpgrade.com



A New York Transco Project