

New York Transco

Building a Clean Energy Future Together

Our Mission

Safely and efficiently deliver innovative electric transmission solutions that advance clean energy to best serve customers, communities and the environment.

Assets in Operation

Ramapo – Rock Tavern 345kV Line

Fraser – Coopers Corners 345kV Line

Staten Island Unbottling of 345kV Line

Our Values



Safety



Innovation



Excellence



Collaboration

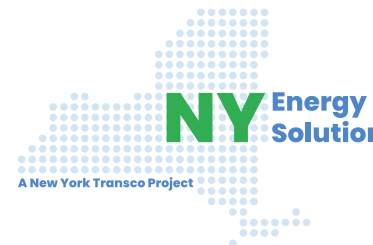


Agility

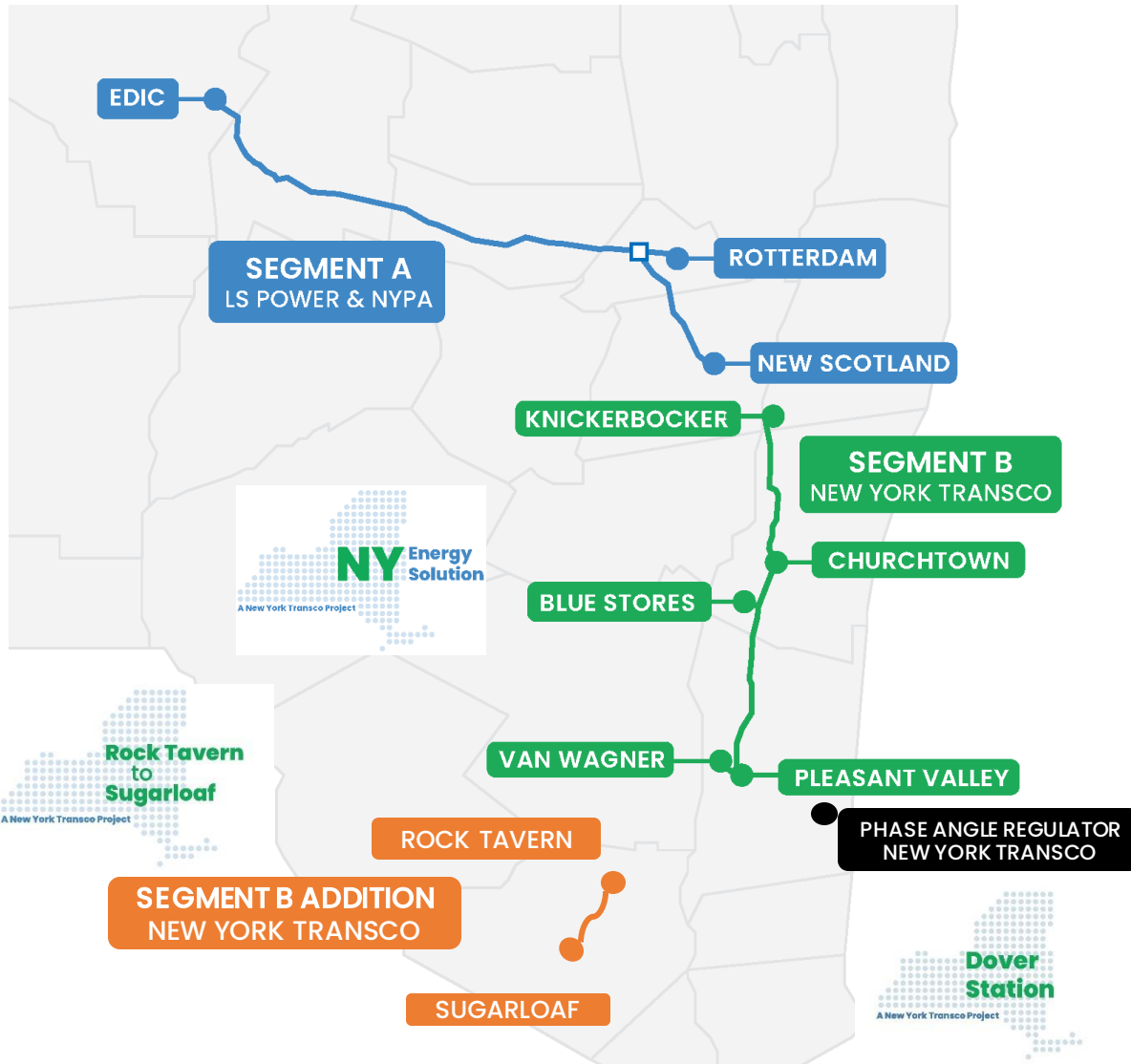
Our Projects

- Facilitate clean energy
- Relieve system congestion
- Reduce energy prices
- Bolster system reliability
- Focus on community connections
- Support local jobs & economies
- Leverage an expert industry team

Awarded & Active Projects

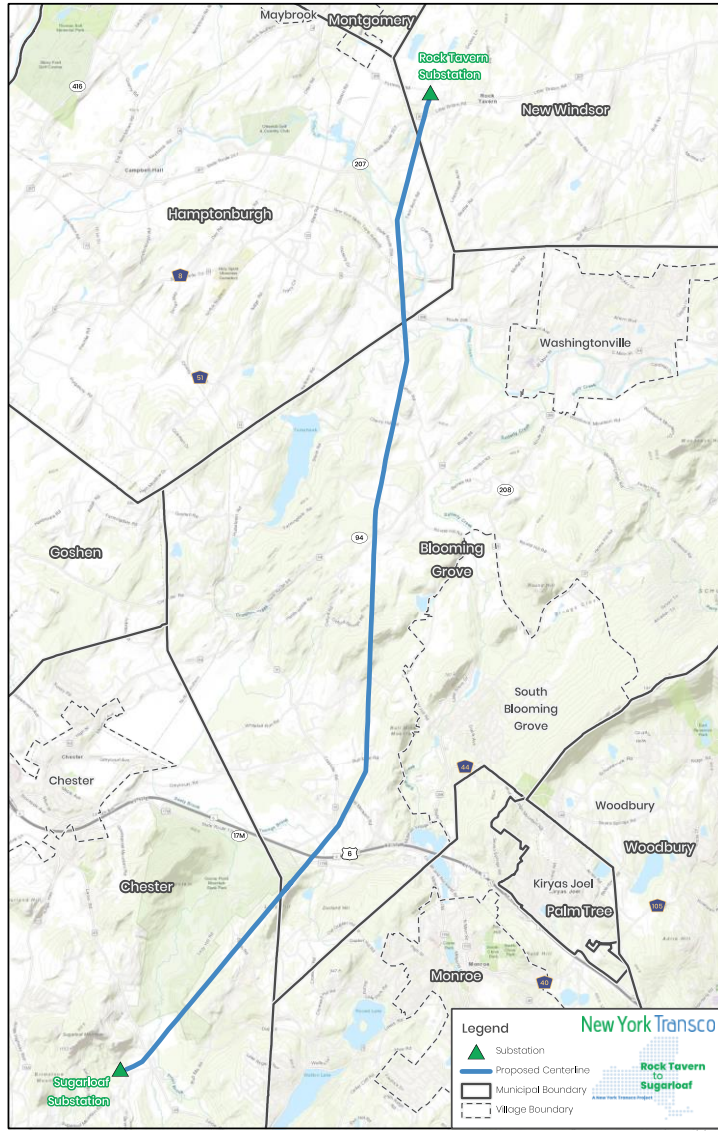


NYISO-Selected Projects



- ✓ Competitively selected by NY Independent System Operator (NYISO)
- ✓ Help NYS advance clean energy goals
- ✓ Facilitate clean energy
- ✓ Relieve system congestion
- ✓ Reduce energy prices
- ✓ Bolster system reliability

Rock Tavern to Sugarloaf (RTS)



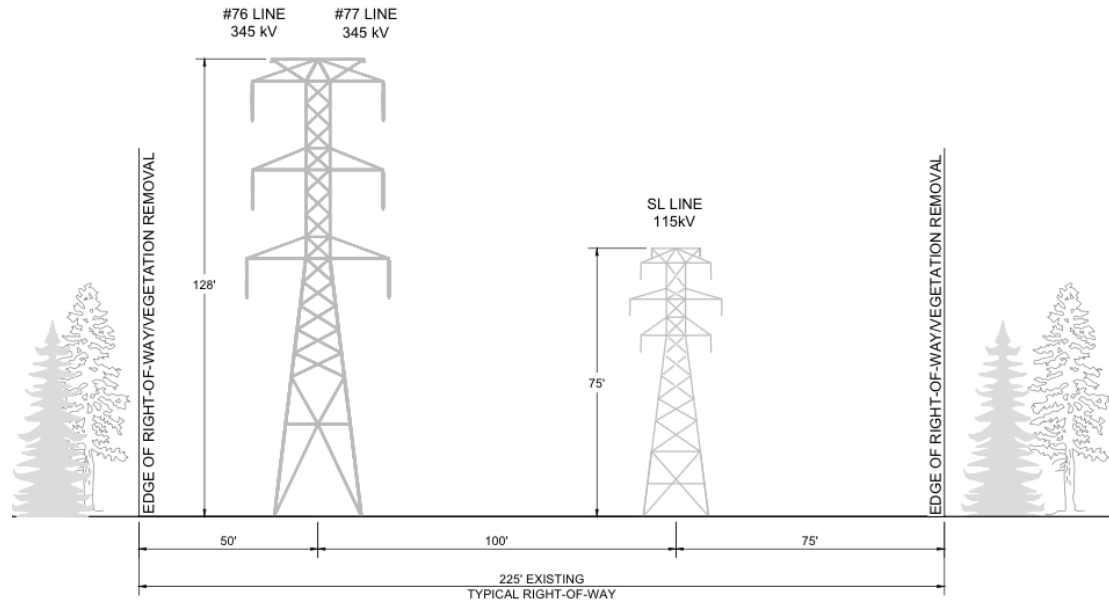
Town	Station/Mileage
New Windsor	Rock Tavern/0.5
Hamptonburgh	2
Blooming Grove	6.75
Chester	Sugarloaf/2.5



New monopole structures are on average 6 feet higher than existing lattice structures

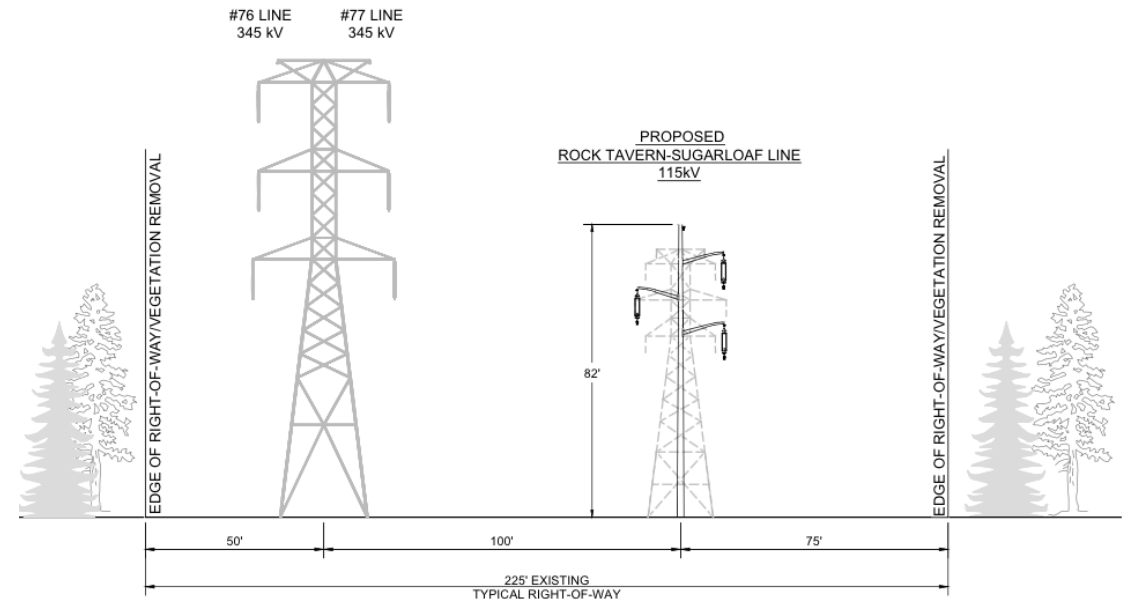
All work is in an existing utility corridor and/or on utility lands

General Cross Section



EXISTING CROSS SECTION

Current



PROPOSED CROSS SECTION

Future

- Cross Section is a general example
- Stays within existing transmission corridor
- Approx. 6' average height increase with new monopoles

RTS Permitting & Coordination



Article VII

- NYS Public Service Law
- “One-stop-shop” for electric transmission projects
- New York Public Service Commission
- Many public involvement opportunities

Public comments:

www.dps.ny.gov

Case Number 20-T-0549

Municipal Coordination

- Road Use Agreements
- Storm Water Pollution Prevention Plans (SWPPP)
- Update briefings

RTS Construction

NYS PSC's Article VII

- Application Submitted – 11/5/20
(Case 20-T-0549)
- Public Hearings – 5/4/21
- CECPN granted – 9/9/21
- EM&CPs submitted and approved
 - Phase I EM&CP submitted – 10/19/21
 - Phase II EM&CP submitted – 1/14/22
 - Phase I EM&CP approved – 1/20/22
 - Phase II EM&CP approved – 5/12/22
- Notice to Proceed with Construction

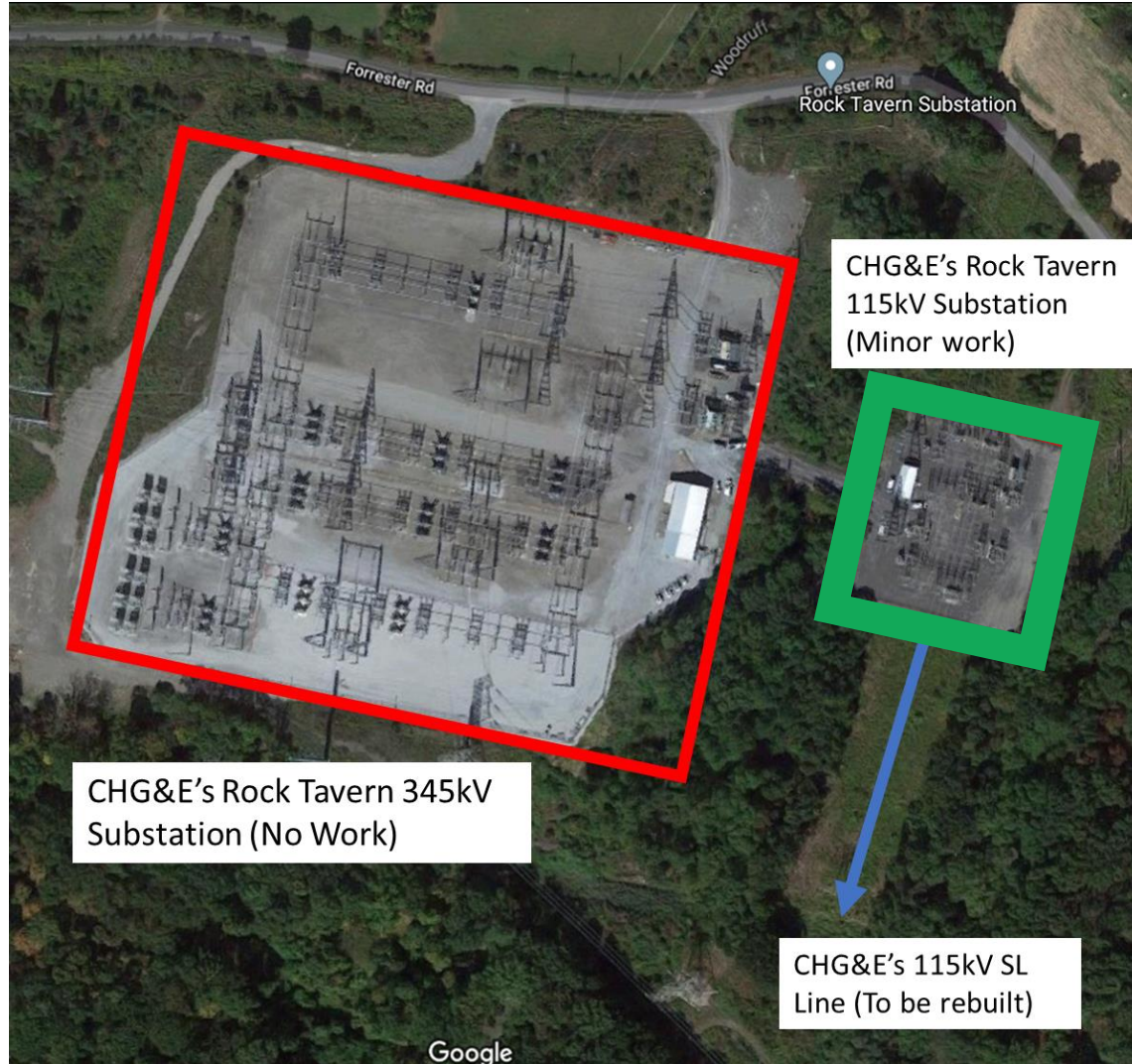
Est. Construction Schedule

- Phase I completed in March 2022
 - Vegetation removal at existing Station in Chester
- Phase II to begin est. June 6, 2022
 - Transmission line
 - Station work in New Windsor & Chester

Pre-Construction Activities

- Pre-construction road use surveys
- Pre-construction meeting
- Notifications & website updates

Rock Tavern Substation

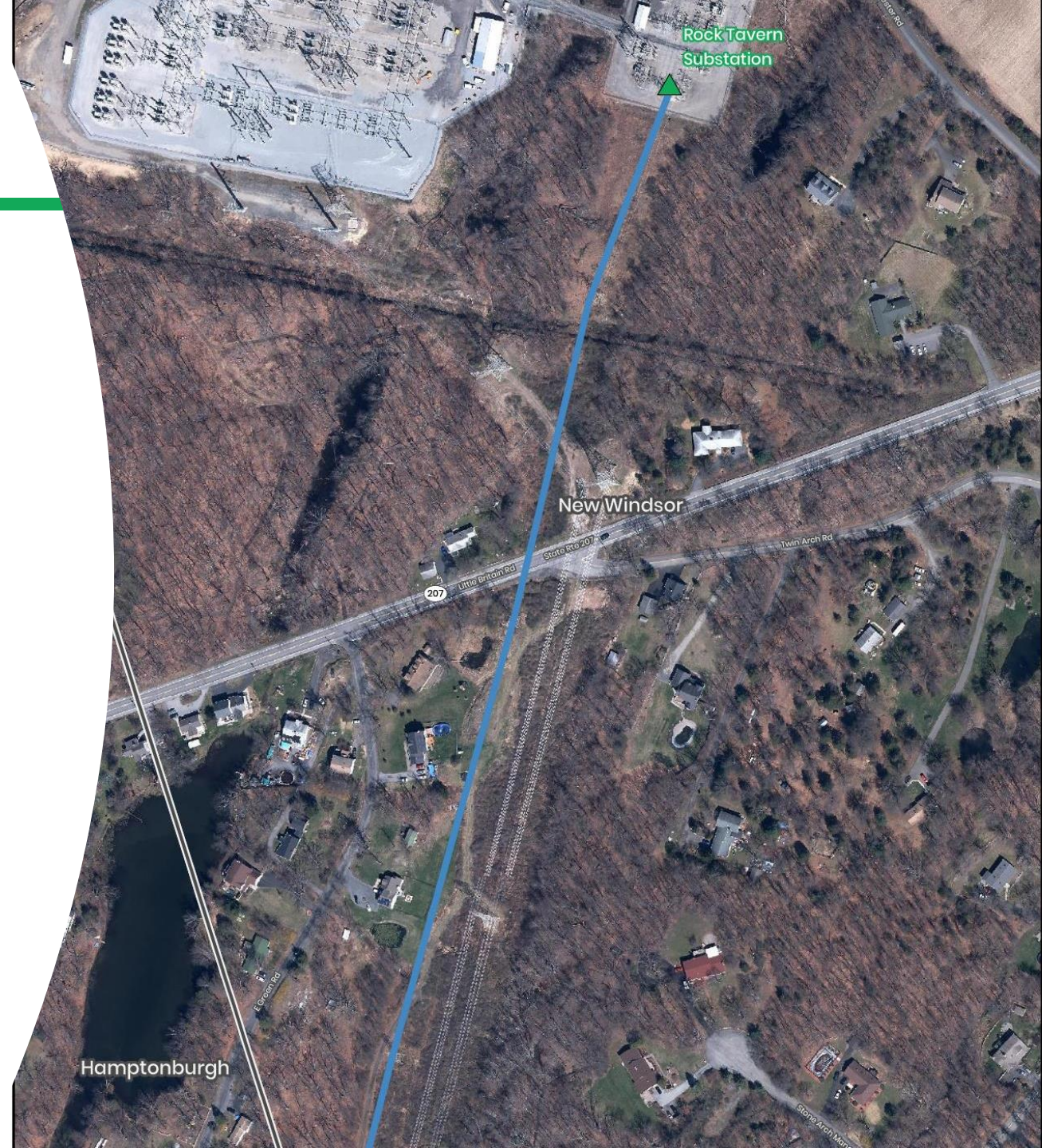


- Location: New Windsor, Off Forrester Rd
- Owned and operated by Central Hudson Gas & Electric
- Minor modifications to 115kV substation
 - Equipment upgrades
 - Terminal structure
 - Relay protection

New Windsor

Approx. 0.5 miles of
overhead transmission
line work

3 existing lattice
structures removed and
replaced with 3 new
monopoles



Hamptonburgh

Approx. 2 miles of
overhead transmission
line work

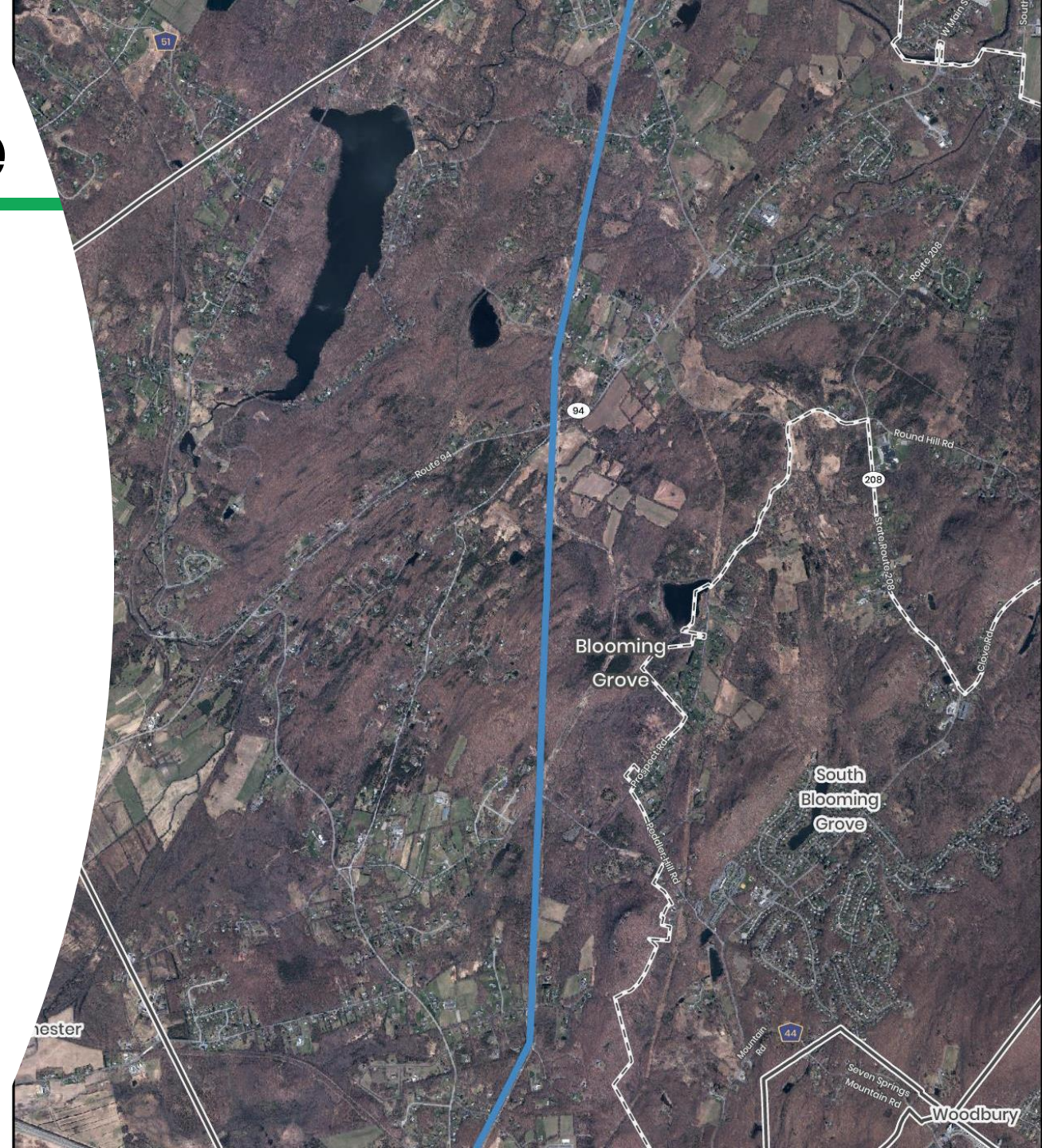
15 existing lattice
structures removed and
replaced with 15 new
monopoles



Blooming Grove

Approx. 6.75 miles of
overhead transmission
line work

51 existing lattice
structures removed and
replaced with 50 new
monopoles



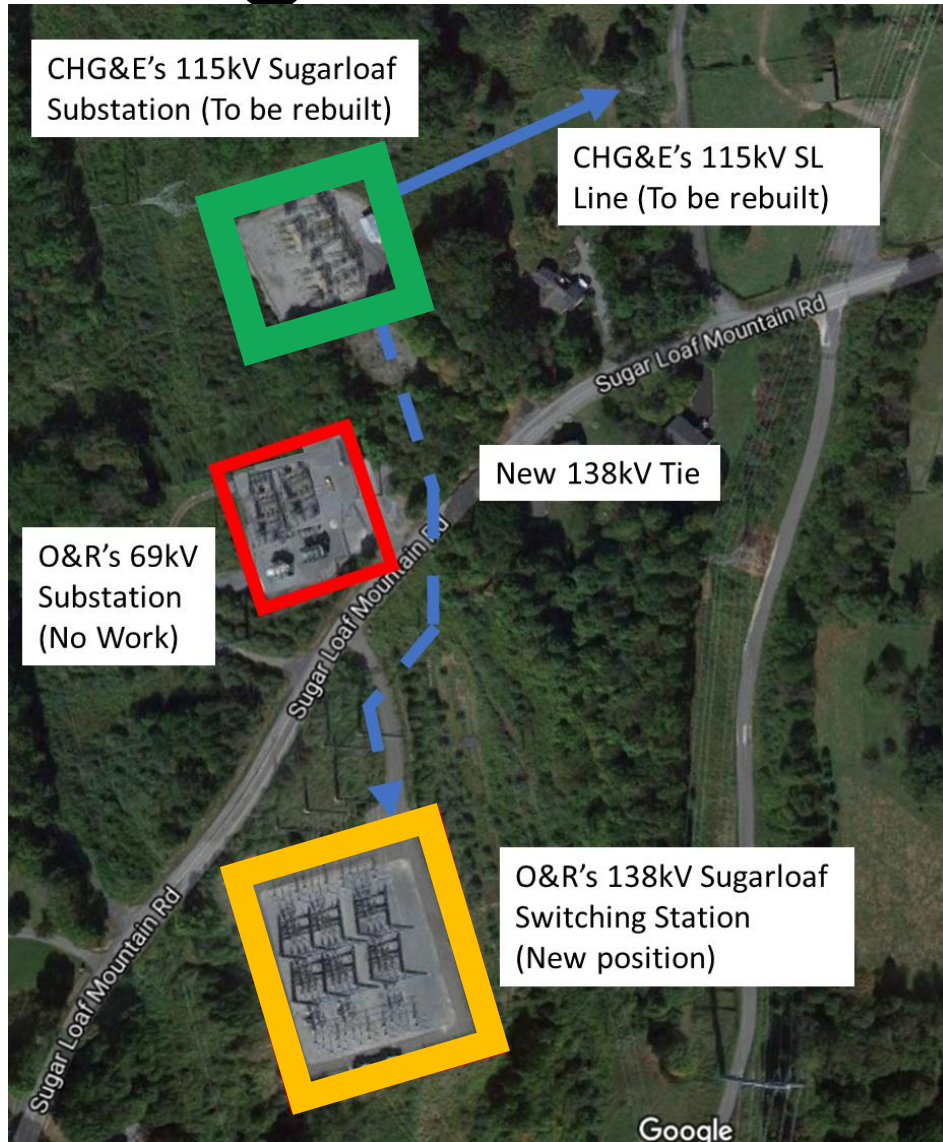
Chester

Approx. 2.5 miles of
overhead transmission
line work

20 existing lattice
structures removed and
replaced with 22 new
monopoles



Sugarloaf Substation

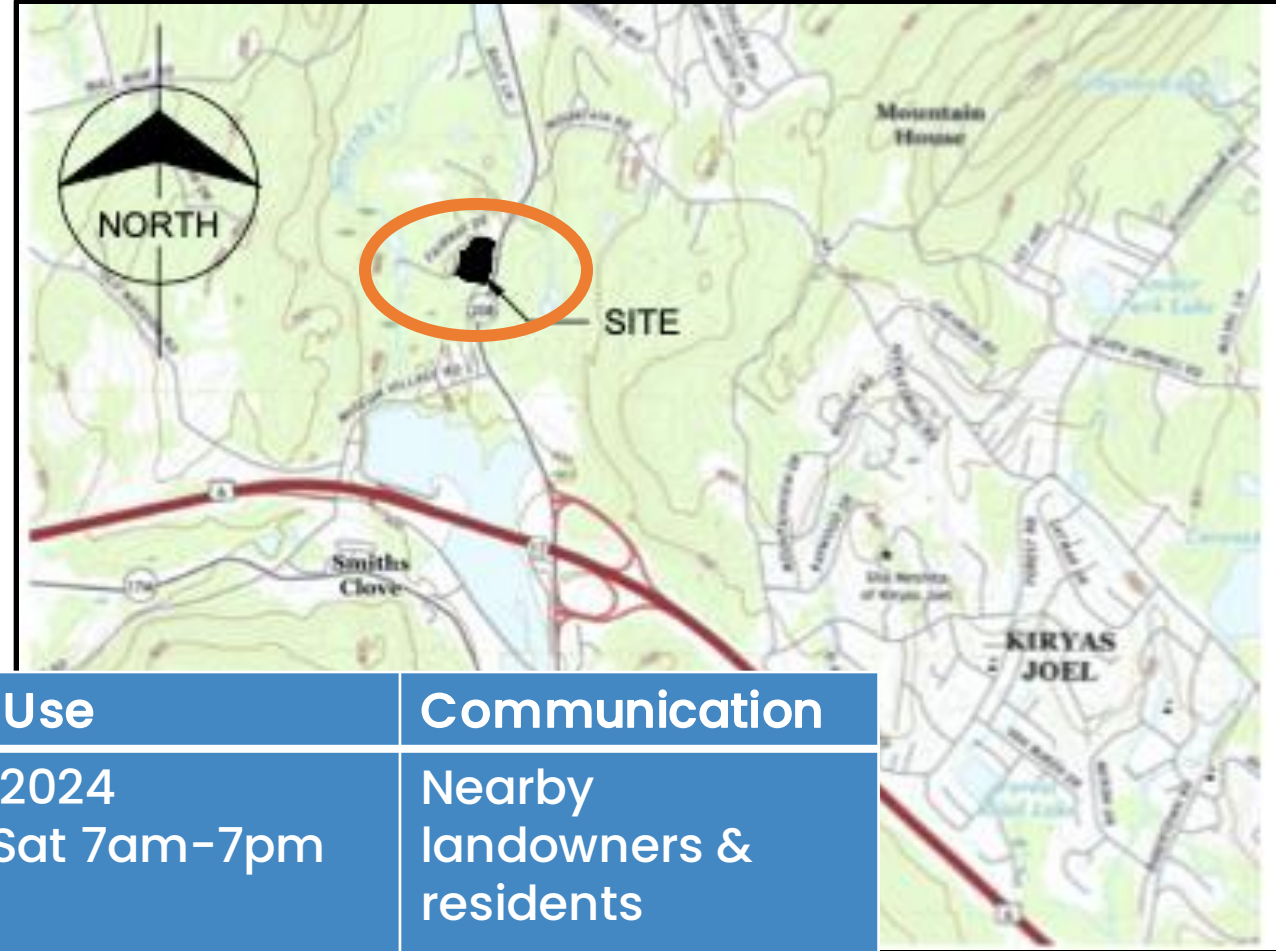
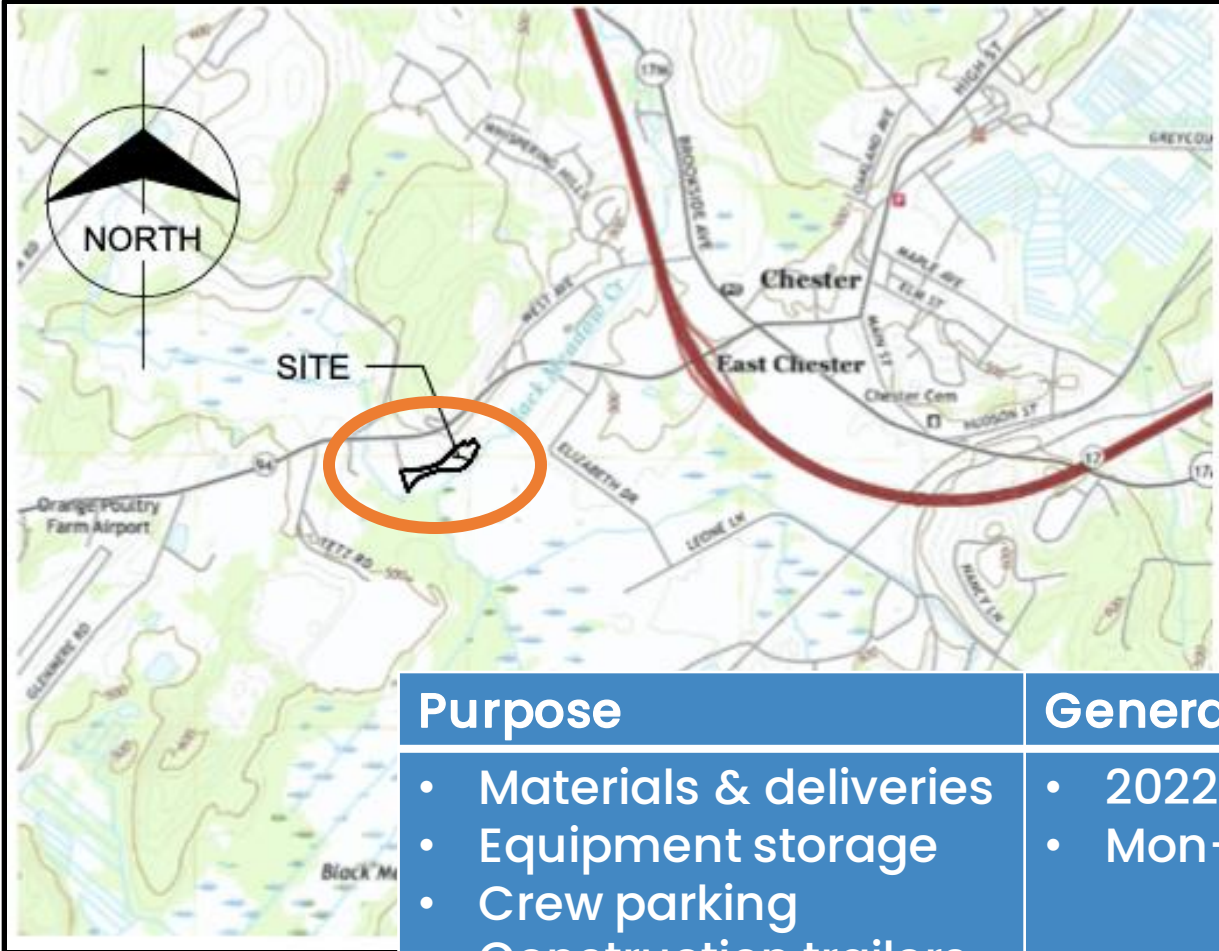


- Location: Chester, Off Sugar Loaf Mountain Road
- Proposed RTS line comes into the Central Hudson 115kV station
- **Complete rebuild of 115kV station**
 - Ring bus with 115/138kV transformer
- Build approx. 1000' 138kV tie to O&R's 138kV switching station
- Build new position in existing footprint at O&R's 138kV switching station

Laydown Yards

Site: Andrews Lane, Chester

Site: Rt 208, Village of South Blooming Grove



Purpose	General Use	Communication
<ul style="list-style-type: none">Materials & deliveriesEquipment storageCrew parkingConstruction trailers	<ul style="list-style-type: none">2022-2024Mon-Sat 7am-7pm	Nearby landowners & residents

Use Starting June 2022

Basic Construction Process



Site Preparation

- Laydown yards
- Survey flagging & staking
- Mowing and tree removal
- Gravel or matted roads
- Work pads installed



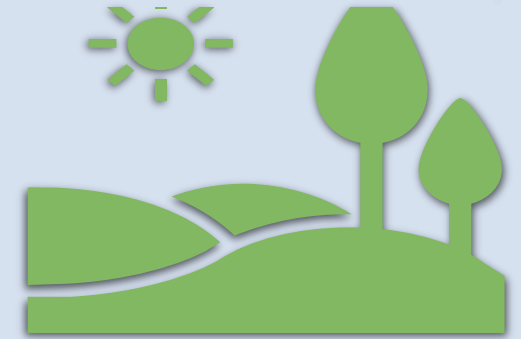
Environmental Controls

- Measures installed to help prevent runoff, travel of invasive species, etc.
- Examples: straw bales, silt fence, concrete washouts, etc.



Transmission Line Rebuilding

- Drill foundations
- Structures positioned, assembled, and installed
- Wire strung and energized
- Old structures removed
- Energization



Restoration

- Native shrubs and ground cover regrow

2022-2023:
Construction

Construction Information



- **Construction Contractors:** Michels (lead); Supreme Industries (access)
 - **Work Schedule:** Mon – Sat 7AM – 7PM
 - After Hours Work: Calls & emails to Supervisor and Clerk; approval by NYDPS
 - Neighbors notified with doorhanger
 - **Environmental & Safety Training:** Given to all project personnel
 - **Monthly Reports:** Sent to NYDPS; includes public comments
 - **Complaints:** If unresolved within 10 days, reported to NYDPS
 - **Review EM&CP:** Area libraries; project website (www.RTSUpgrade.com)
- **Notifications:**
 - Construction Commencement Notice
 - Area-Specific Landowner Construction Notices: Occurs 14-30 days prior to start
 - List of hazardous materials sent to emergency and medical agencies
 - Post Construction: Restoration, unauthorized access prevention
 - Project Updates – website
 - **Outreach Contacts:**
 - Nicole Chamoun– Community Liaison
800.314.4236 (toll-free); questions@RTSUpgrade.com
 - Jesse Bova– Agricultural Inspector

Keeping You Informed!

- Committed to working with all project stakeholders
- Proactive, transparent and accessible
 - Municipal Consultations & Briefings
 - One-on-One Abutter Meetings
 - Open houses
 - Project Notifications, Fact Sheets, PPTs
 - Toll-free hotline, email, website
- Ask questions or voice comments at any time!



800-314-4236



www.RTSUpgrade.com



questions@RTSUpgrade.com

Questions/Comments?

- Use the Q&A feature
- Raise your hand



800-314-4236



www.RTSUpgrade.com



questions@RTSUpgrade.com