



---

# Rock Tavern to Sugarloaf Project

# Overview

---



- New York Transco LLC
- NYISO Selection
- Routing Analysis
- Rock Tavern to Sugarloaf Upgrade (RTS)
- Project Benefits

# New York Transco



- Owner & developer of bulk power transmission facilities in NY
- Owned by affiliates of Con Edison, National Grid, AVANGRID and CH Energy Group
- Board of Directors, Officers and full time employees
- Office in Hudson, NY
- Current projects to support NY clean energy goals:
  - New York Energy Solution (NYES)
  - Rock Tavern to Sugarloaf Upgrade (RTS)

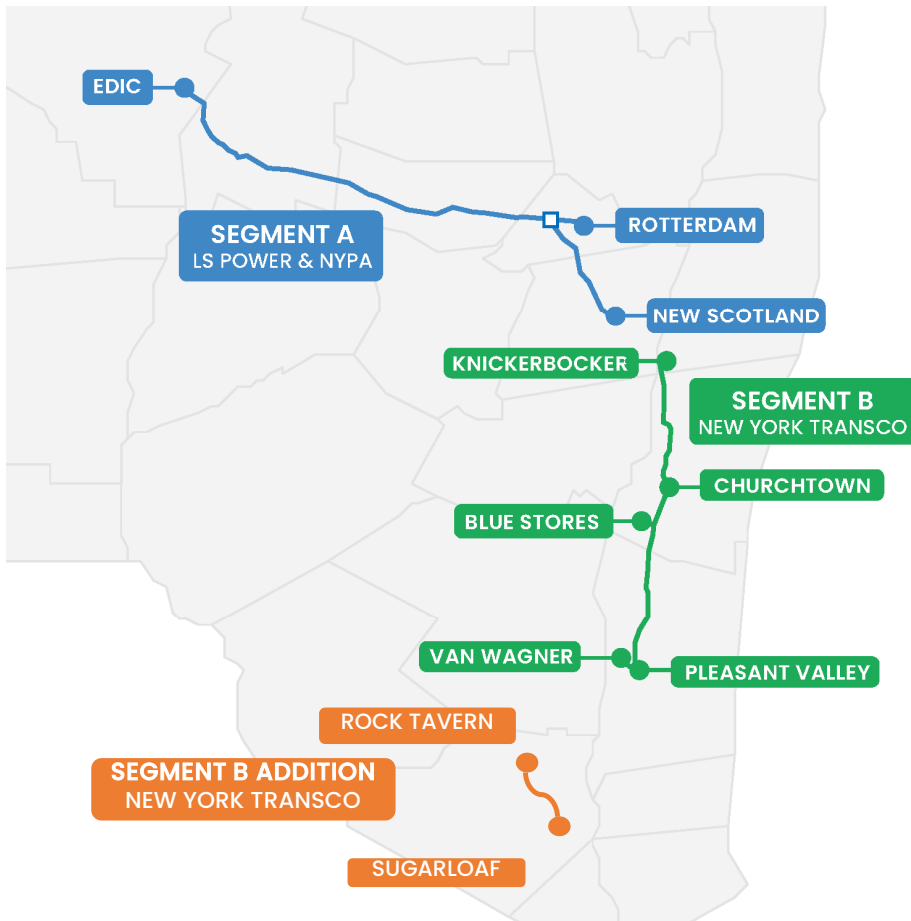
## Completed Projects:

Ramapo – Rock  
Tavern 345kV  
Transmission Line

Fraser – Coopers  
Corners 345kV Line  
with Reactive Support

Staten Island  
Unbottling

# NYISO-Selected Projects



- Public policy, competitive selection in April '19
- Relieve congestion & facilitate renewables from upstate resources to downstate customers
- Upgrade aging system(s)
- All must be in-service December 2023

## Segment A:

- Utica to outside of Albany
- LS Power & NYPA

## Segment B (New York Energy Solution):

- Schodack to Pleasant Valley
- NY Transco

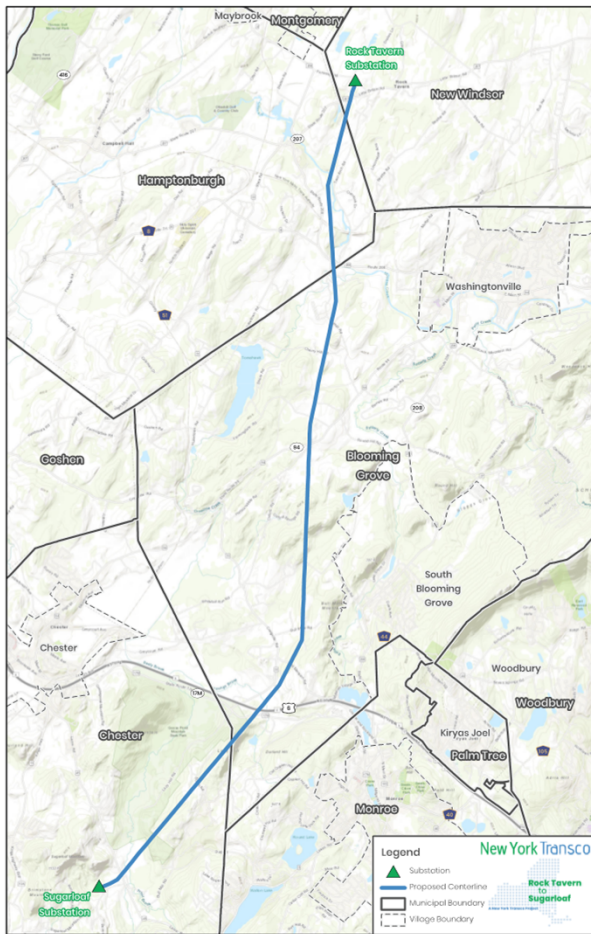
## Segment B Addition (Rock Tavern to Sugarloaf):

- New Windsor to Chester
- NY Transco

# Rock Tavern to Sugarloaf (RTS)

Rock Tavern  
to  
Sugarloaf

A New York Transco Project



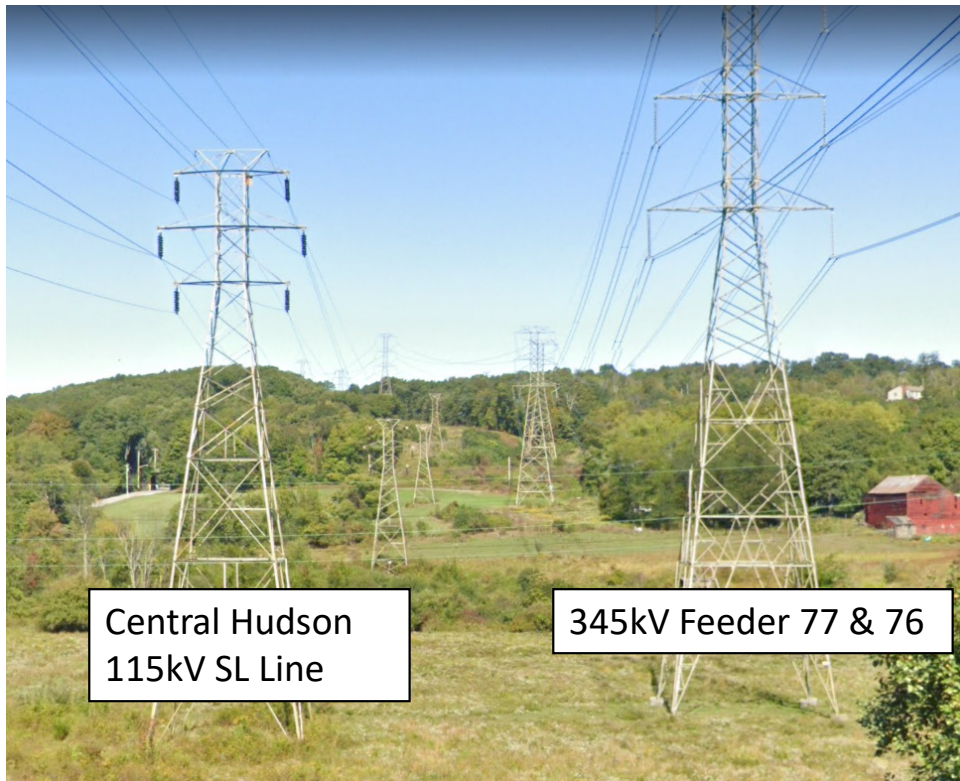
- Replaces 95 year old assets in existing ROW
- 12-mile overhead 115kV on monopoles
- Upgrades at existing stations

Town	Station/Mileage	Road Crossings
New Windsor	Rock Tavern/0.5	1
Hamptonburgh	2	2
Blooming Grove	6.75	12
Chester	Sugarloaf/2.5	4

## Estimated Timeline

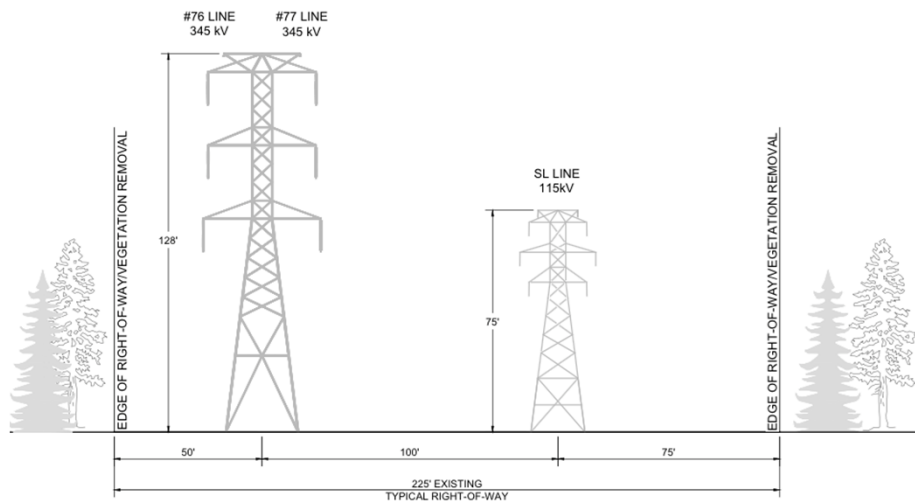


# Transmission Line Rebuild



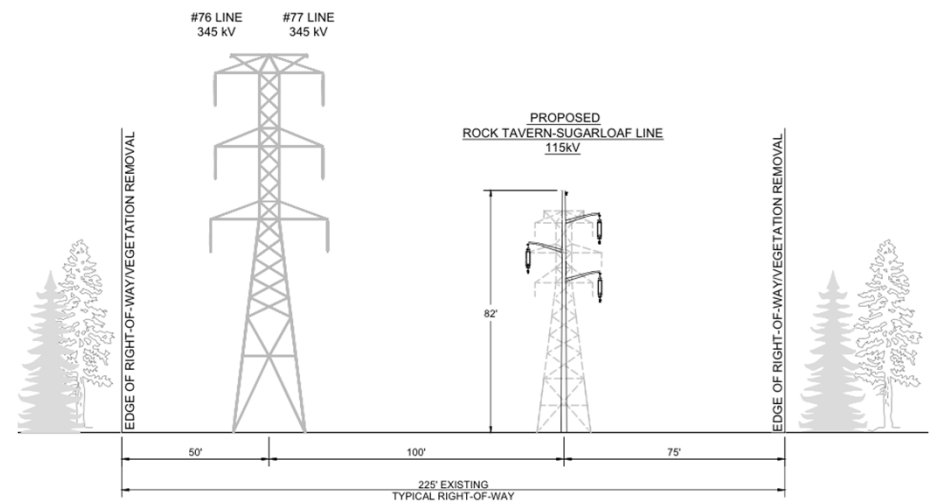
- Rebuild 12 miles 115kV SL Line
- Replace existing lattice structures & conductor
- New single circuit steel monopoles & larger conductor
- All in existing ROW

# Preliminary Cross Section



EXISTING CROSS SECTION

Current

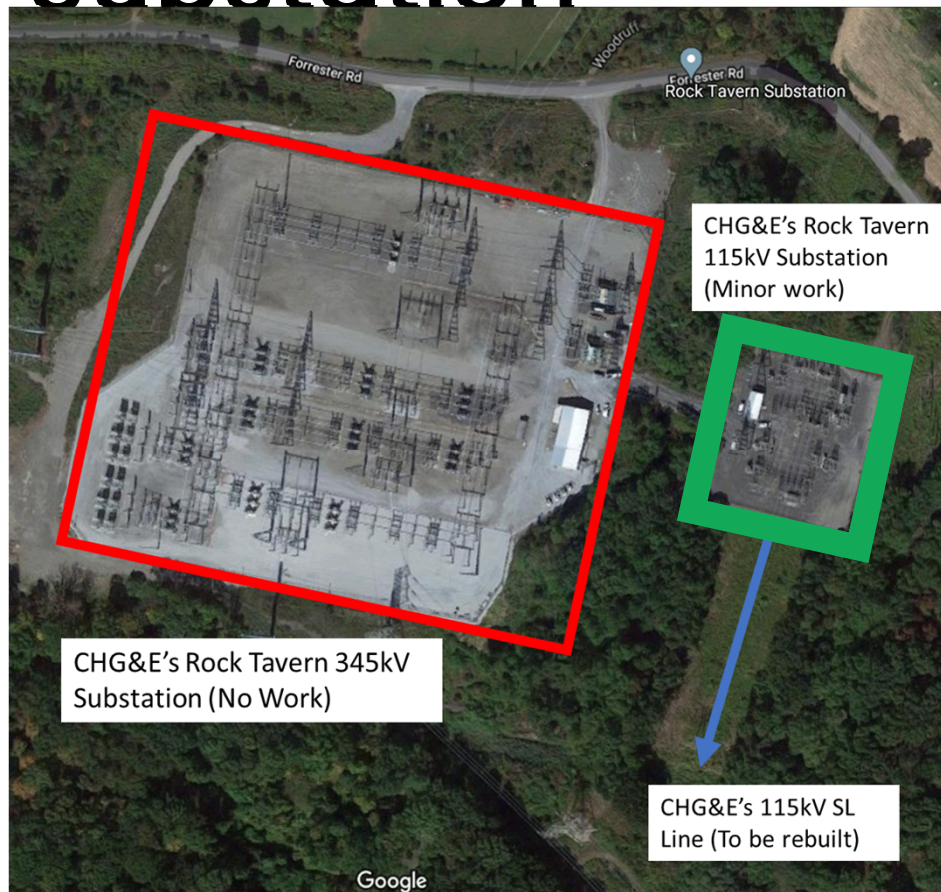


PROPOSED CROSS SECTION

Future

- Stays within existing transmission corridor
- Approx. 6' average height increase with new monopoles
- All engineering & design is preliminary and subject to change

# Rock Tavern Substation

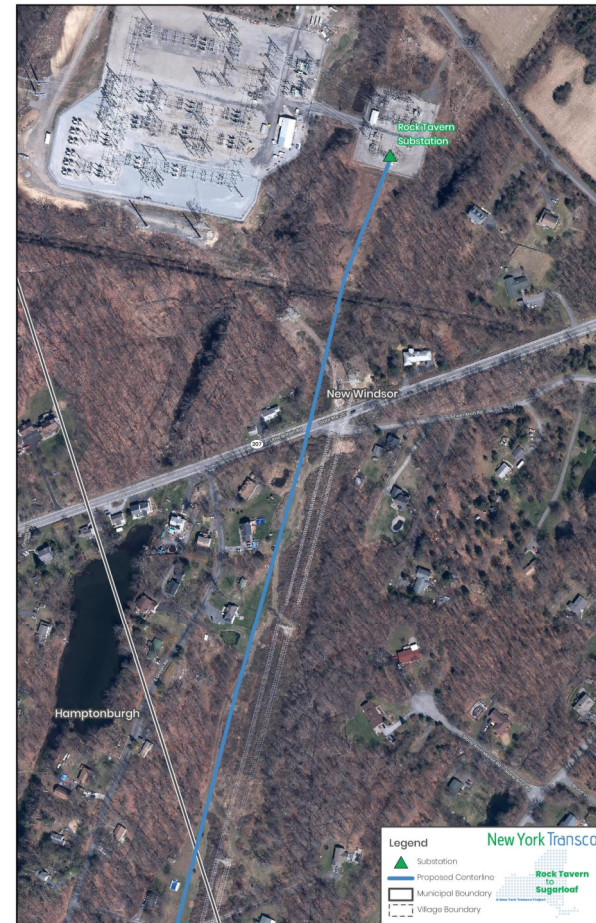


- Location: New Windsor, Off Forrester Rd
- Owned and operated by Central Hudson Gas & Electric
- Minor modifications to 115kV substation
  - Terminal structure
  - Relay protection



# RTS in New Windsor

- Approx. 0.5 miles of overhead transmission line work
- Road crossing:
  - Little Britain Road



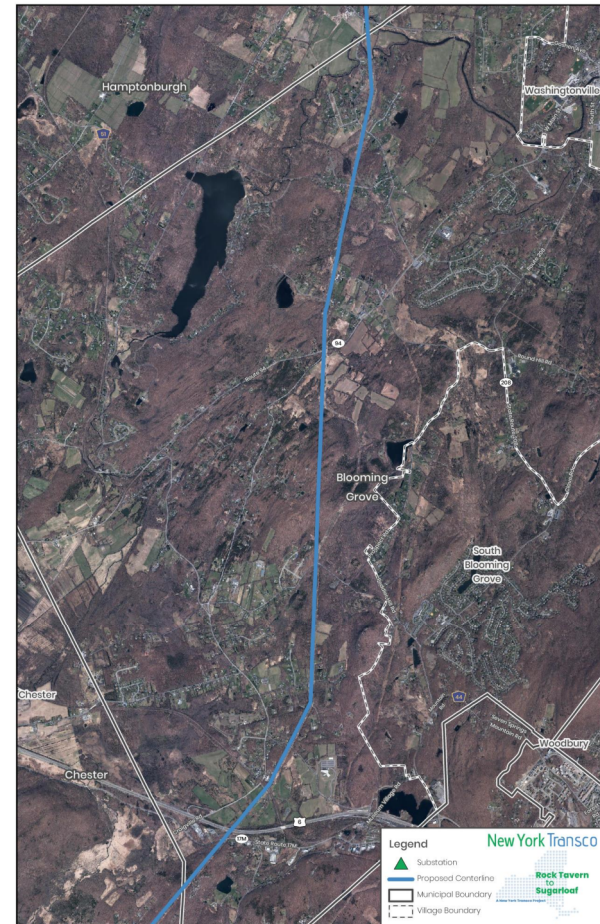
# RTS in Hamptonburgh

- Approx. 2 miles of overhead transmission line work
- Road crossing:
  - NY-208



# RTS in Blooming Grove

- Approx. 6.75 miles of overhead transmission line work
- Crosses the Orange Heritage Trail
- Road crossings:
  - Willow Creek Road
  - Tuthill Road
  - Cherry Hill Road
  - Farmingdale Road
  - NY-94
  - Oxford Road
  - Prospect Road
  - Bull Mine Road
  - Alta Mira Drive
  - Trestle Tree Lane
  - US-6
  - Tuthill Road
  - NY-17M

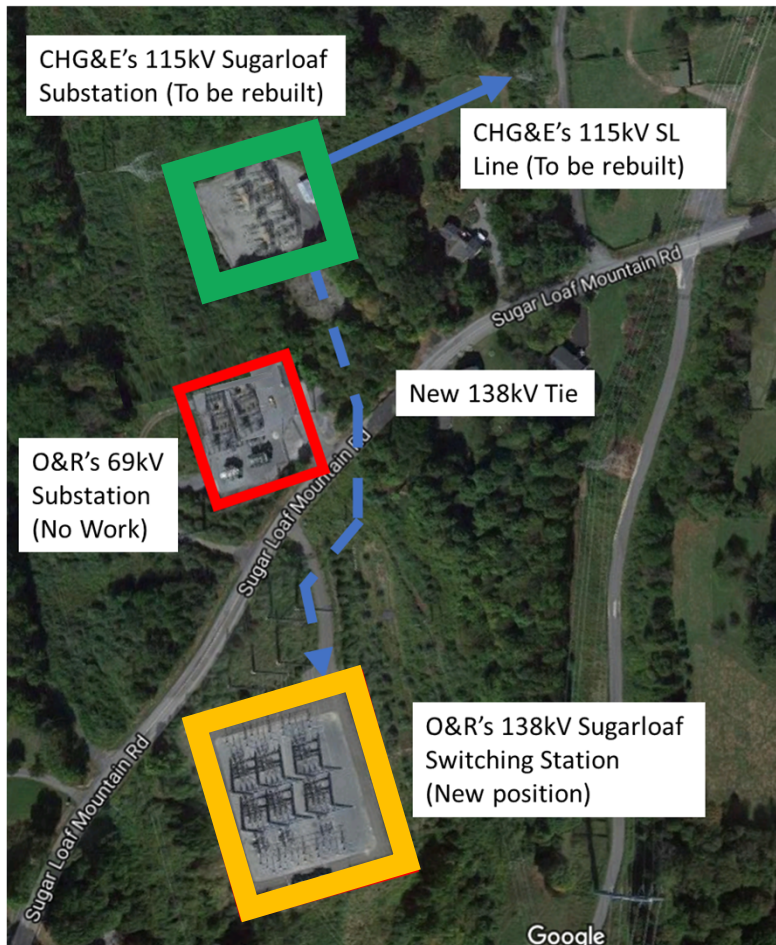


# RTS in Chester

- Approx. 2.5 miles of overhead transmission line work
- Road crossings:
  - Booth Road
  - Laroe Road
- Upgrades at Sugarloaf Substation (off Sugar Loaf Mountain Rd)



# Sugarloaf Substation



- Location: Chester, Off Sugar Loaf Mountain Road
- Proposed RTS line comes into the Central Hudson 115kV station
- Complete rebuild of 115kV station
  - Ring bus with 115/138kV transformer
- Build approx. 1000' 138kV tie to O&R's 138kV switching station
- Build new position in existing footprint at O&R's 138kV switching station

# RTS Permitting



## Article VII

- “One-stop-shop” for electric transmission projects
- New York Public Service Commission
- Basic Steps:
  1. Article VII Application submittal
  2. Public Hearings
  3. Certificate of Environmental Compatibility & Public Need granted
  4. Environmental Monitoring and Construction Plan (EM&CP) submitted and approved
  5. Notice to Proceed with Construction
- Many public involvement opportunities

## Other Permits

- U.S. Army Corps of Engineers
- FAA Review
- New York State DOT permits
- Local highway permits

# Stakeholder Engagement



- Committed to working with all project stakeholders
- Proactive, transparent and accessible
- Multi-phase plan launched 7/20
  - Municipal Consultations & Briefings
  - One-on-One Abutter Meetings
  - Open houses/Community Meetings
  - Project Notifications, Fact Sheets, PPTs
- Open House were conducted in October 2020



800-314-4236



[www.RTSUpgrade.com](http://www.RTSUpgrade.com)



[questions@RTSUpgrade.com](mailto:questions@RTSUpgrade.com)

# RTS Benefits

---



Stays within Existing  
Utility Rights-of-Way

Designed to  
minimize local  
impacts

More Resiliency

Replaces 95 year old  
assets

Unlocks Clean  
Energy Resources

Job Creation  
& Tax Revenues



**Questions?**



800-314-4236

**Feedback?**



[www.RTSUpgrade.com](http://www.RTSUpgrade.com)



[questions@RTSUpgrade.com](mailto:questions@RTSUpgrade.com)