

### What is RTS?

The Rock Tavern to Sugarloaf Project (RTS) is a 12-mile electric transmission upgrade that will strengthen the grid between the Rock Tavern and Sugarloaf substations by replacing an aging overhead 115kV line on lattice structures with a new 115kV line on monopole structures in an existing transmission corridor.

### Why is RTS needed?

The New York Public Service Commission and the New York Independent System Operator (NYISO) identified a transmission upgrade in Orange County needed to maximize other system upgrades that will relieve congestion and bring renewable energy from upstate to downstate.

### Core Components

- All work is in utility rights-of-way or property
- Replace 12 miles of 95 year old 115kV line on lattice structures with new 115kV monopole structures and line with a 6 foot average height increase
- Upgrades to the existing Rock Tavern and rebuild of Sugarloaf substations
- Towns: New Windsor, Hamptonburgh, Blooming Grove and Chester

### About the Developer

RTS is being developed and permitted by New York Transco, an owner and developer of transmission facilities in New York. New York Transco is headquartered in Hudson, NY. [www.NYTransco.com](http://www.NYTransco.com)

### Key Project Benefits

- Bolsters the NY power grid to move renewable energy
- Stays in existing utility rights-of-way to minimize impacts
- Replaces aging assets
- Committed to working with local stakeholders
- Increases local tax revenues

### Estimated Timeline



### Permitting & Approvals

New York Transco will obtain permits and approvals from state and federal agencies to construct the upgrade. The New York Article VII is a key permit and is a “one-stop-shop” for projects like RTS. The New York Public Service Commission approved New York Transco’s Article VII in Case Number 20-T-0549, on September 9, 2021.

### Community Collaboration

RTS is committed to working with host communities, residents, businesses, landowners, elected and appointed officials, and community groups. We want to hear your feedback.

### Get In Touch



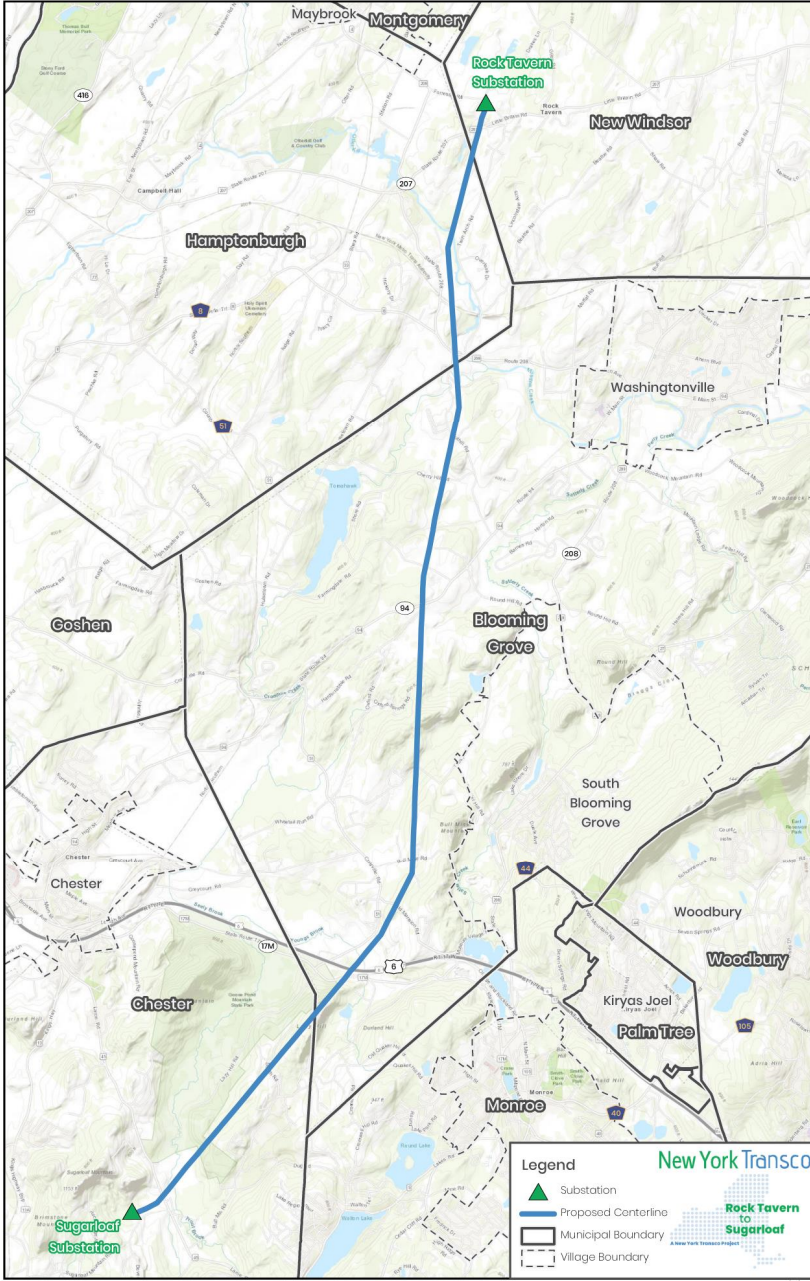
Toll-Free: 1-800-314-4236



[www.RTSUpgrade.com](http://www.RTSUpgrade.com)



[questions@RTSUpgrade.com](mailto:questions@RTSUpgrade.com)



### Project Status

- Phase 1 Construction
  - Completed March 2022
- Phase 2 Construction
  - Est. to begin on June 6, 2022

### New Windsor

- Rock Tavern Substation Work
- 0.5 miles overhead line
- Replace 3 existing lattice with 3 new monopoles

### Hamptonburgh

- 2 miles overhead line
- Replace 15 existing lattice with 15 new monopoles

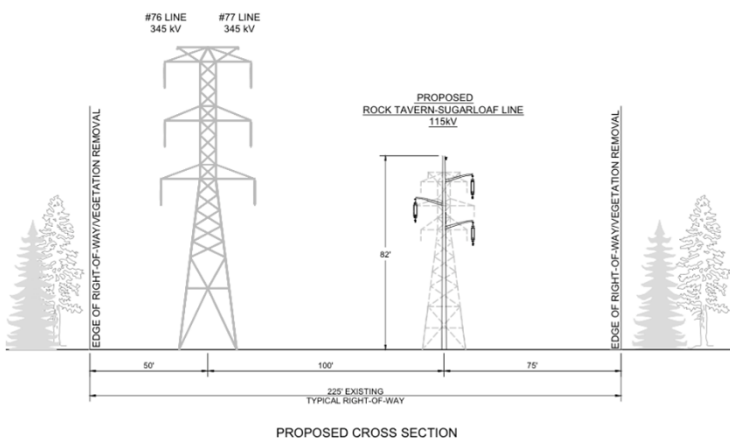
### Blooming Grove

- 6.75 miles overhead line
- Replace 51 existing lattice with 50 new monopoles

### Chester

- 2.5 miles overhead line
- Replace 20 existing lattice with 22 new monopoles
- Sugarloaf Substation work

*\*Please note all mileage and structure totals are preliminary.*



Example cross section with new monopole superimposed on top of existing, to-be-removed lattice structure. The taller 345kV is not part of the project and will remain.