



Dear Neighbor,

New York Transco (Transco) recently submitted a supplemental filing to the second phase of construction plans for the Rock Tavern to Sugarloaf Upgrade Project (RTS). This filing includes minor revisions to the previously filed plans that address comments received through the regulatory process.

The Phase II Environmental Management and Construction Plan (Phase II EM&CP) was submitted to the New York Public Service Commission (PSC) under PSC Case # 20-T-0549 on January 14, 2022.

**What is the Phase II EM&CP?**

This submittal includes plans and specifications for environmental protections and construction activities associated with rebuilding the 12-mile 115 kilovolt (kV) transmission line between the Rock Tavern Substation in New Windsor and the Sugarloaf Substation in Chester. The submittal also includes construction plans for the rebuilt Sugarloaf Substation off Sugarloaf Mountain Road and an approx. 1000-foot 138 kV tie line connecting the rebuilt Substation to Orange & Rockland’s existing 138 kV Switching Station. Pending regulatory approvals, construction will begin as early as this spring (2022).

**How can I review and comment?**

The Phase II EM&CP document and supplemental filing can be reviewed either on the PSC’s website ([www.dps.ny.gov](http://www.dps.ny.gov)) under Case # 20-T-0549; on the project website at [www.RTSUpgrade.com](http://www.RTSUpgrade.com).

**What is the status of the Phase I EM&CP?**

The Phase I EM&CP included plans and specifications for environmental protections and vegetation removal activities associated with rebuilding the 115 kV Sugarloaf Substation in Chester. The work covered by the Phase I EM&CP was completed in early March 2022.

If you have questions, please contact us on our toll-free hotline at **800-314-4236** or email us at [questions@RTSupgrade.com](mailto:questions@RTSupgrade.com).

Best Regards,

A handwritten signature in black ink that reads "Shannon Baxevanis".

Shannon Baxevanis  
New York Transco

Enclosures: Project Fact Sheet

# Project Fact Sheet

Winter 2021–2022

## What is RTS?

The Rock Tavern to Sugarloaf Project (RTS) is a 12-mile electric transmission upgrade that will strengthen the grid between the Rock Tavern and Sugarloaf substations by replacing an aging overhead 115kV line on lattice structures with a new 115kV line on monopole structures in an existing transmission corridor.

## Why is RTS needed?

The New York Public Service Commission and the New York Independent System Operator (NYISO) identified a transmission upgrade in Orange County needed to maximize other system upgrades that will relieve congestion and bring renewable energy from upstate to downstate.

## Core Components

- All work is in utility rights-of-way or property
- Replace 12 miles of 95 year old 115kV line on lattice structures with new 115kV monopole structures and line with a 6 foot average height increase
- Upgrades to the existing Rock Tavern and Sugarloaf substations
- Towns: New Windsor, Hamptonburgh, Blooming Grove and Chester

## About the Developer

RTS is being developed and permitted by New York Transco, an owner and developer of transmission facilities in New York. New York Transco is headquartered in Hudson, NY. [www.NYTransco.com](http://www.NYTransco.com)

## Key Project Benefits

- Bolsters the NY power grid to move renewable energy
- Stays in existing utility rights-of-way to minimize impacts
- Replaces aging assets
- Committed to working with local stakeholders
- Increases local tax revenues

## Estimated Timeline



## Permitting & Approvals

New York Transco will obtain permits and approvals from state and federal agencies to construct the upgrade. The New York Article VII is a key permit and is a “one-stop-shop” for projects like RTS. The New York Public Service Commission approved New York Transco’s Article VII in [Case Number 20-T-0549](#), on September 9, 2021.

## Community Collaboration

RTS is committed to working with host communities, residents, businesses, landowners, elected and appointed officials, and community groups. We want to hear your feedback.

## Get In Touch



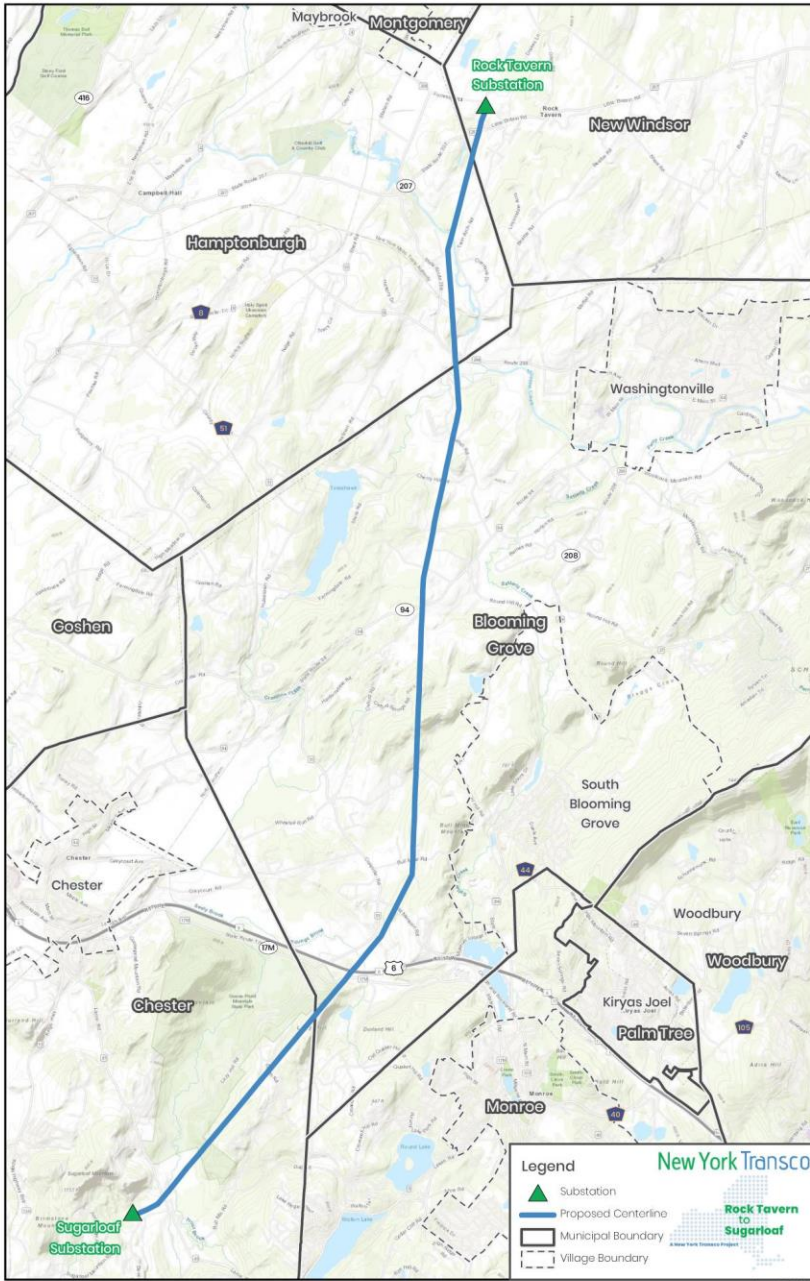
Toll-Free: 1-800-314-4236



[www.RTSUpgrade.com](http://www.RTSUpgrade.com)



[questions@RTSUpgrade.com](mailto:questions@RTSUpgrade.com)



### New Windsor

- Rock Tavern Substation Work
- 0.5 miles overhead line
- Replace 3 existing lattice with 3 new monopoles

### Hamptonburgh

- 2 miles overhead line
- Replace 15 existing lattice with 15 new monopoles

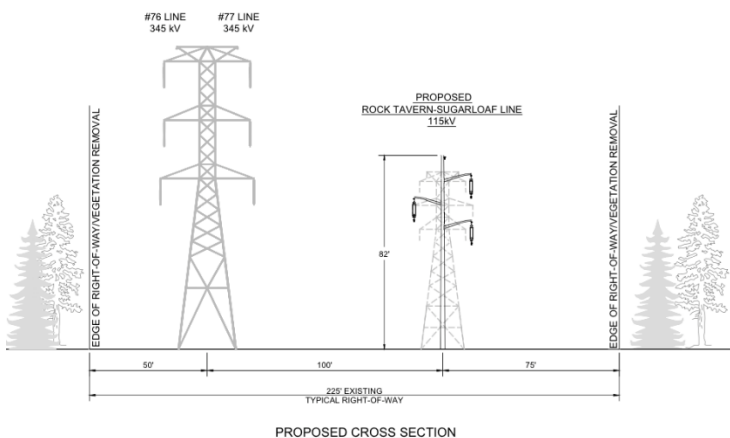
### Blooming Grove

- 6.75 miles overhead line
- Replace 51 existing lattice with 50 new monopoles

### Chester

- 2.5 miles overhead line
- Replace 20 existing lattice with 22 new monopoles
- Sugarloaf Substation work

*\*Please note all mileage and structure totals are preliminary.*



Example preliminary cross section with new monopole superimposed on top of existing, to-be-removed lattice structure. The taller 345kV is not part of the project and will remain.